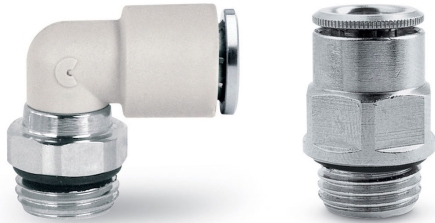


FITTINGS IN TECHNOPOLYMER FOR WATER COOLING APPLICATIONS

SERIES 7000 FLUIDICS

Tube external diameters: 6, 8, 10, 12, 16 mm

Fittings threads: BSP (G1/8, G1/4, G3/8, G1/2, G3/4), M5



Series 7000 Fluidics push-in fittings enable smooth passage of fluids in cooling systems. Liquid cooling systems are considered to be better than air cooling, in terms of efficiency, effectiveness, compactness and noise in a wide range of applications from computer servers to industrial equipment. The Series 7000 Fluidics fitting range has been designed with a special technopolymer, based on renewable raw materials, that allows the component to resist water absorption, temperature variations and cooling liquid additives. The material maintains constant dimensional stability in contact with different fluids and does not breakdown with age.

Advanced gripping characteristics make the Series 7000 Fluidics an excellent alternative to traditional fittings, guaranteeing a uniform tightening on the whole surface of the tube. This enhances high reliability and resistance to repeated connections and disconnections of the tube. Reliable connection, compact dimensions and easy installation in confined spaces are only some of the features that make these new fittings an innovative solution for a wide range of cooling systems.

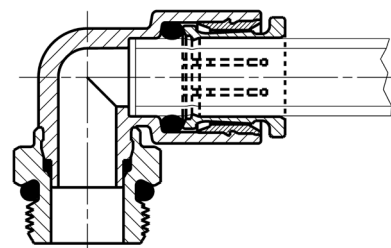
BENEFITS:

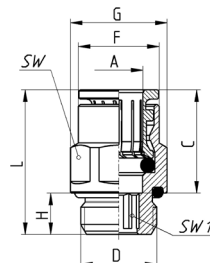
- Easy to connect and disconnect
- Resistant to water pressure and erosion
- Resistant to corrosion
- Dimensional stability with water contact
- Long life cycle

General Data

| Diameters | Ø6 mm | Ø8 mm | Ø10 mm | Ø12 mm | Ø16 mm |
|--------------------------------|---|-------|--------|--------|--------|
| Working pressure at -20°/+40° | 16bar | 16bar | 14bar | 14bar | 12bar |
| Working pressure at -20°/+70° | 16bar | 14bar | 12bar | 10bar | 8bar |
| Working pressure at -20°/+100° | 14bar | 12bar | 10bar | 8bar | 6bar |
| Threads | GAS cylindrical ISO-228 (BSPP) | | | | |
| Tube to connect | Polyurethane (PU), Polyethylene (PE), Polyamide (PA), Fluoropolymer (PTFE) | | | | |
| Medium | Suitable for use with industrial water supplies and specialist cooling fluids. (Please contact us to discuss suitability for other fluids). | | | | |
| Materials | Body: Technopolymer PA11, Seals: EPDM. Threads: Chemical Nickel Plating. Collet (not in contact with cooling fluids): nickel Plated | | | | |

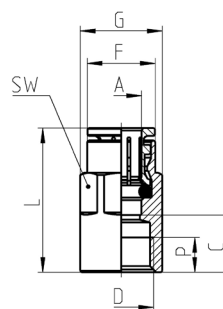
Fitting with connecting tube



FITTINGS IN TECHNOPOLYMER FOR WATER COOLING APPLICATIONS
SERIES 7000 FLUIDICS - DIMENSIONS
BSP male connector Mod. F6512K


| Mod. | A | D | C | F | G | H | L | SW | SW1 | Weight [g] |
|----------------|----|------|------|------|------|---|------|----|-----|------------|
| F6512 6-1/8K | 6 | G1/8 | 16,0 | 11,7 | 13,5 | 6 | 21 | 12 | 4 | 10 |
| F6512 6-1/4K | 6 | G1/4 | 16,0 | 11,7 | 16,4 | 7 | 22 | 15 | 4 | 13 |
| F6512 8-1/8K | 8 | G1/8 | 17,5 | 13,7 | 15,2 | 6 | 26 | 14 | 5 | 15 |
| F6512 8-1/4K | 8 | G1/4 | 17,5 | 13,7 | 16,4 | 7 | 24,5 | 15 | 6 | 17 |
| F6512 8-3/8K | 8 | G3/8 | 17,5 | 13,7 | 20,5 | 7 | 23 | 19 | 6 | 27 |
| F6512 10-1/4K | 10 | G1/4 | 20,2 | 15,4 | 18,5 | 7 | 30 | 17 | 7 | 26 |
| F6512 10-3/8K | 10 | G3/8 | 20,2 | 15,4 | 20,5 | 7 | 24,5 | 19 | 8 | 27 |
| F6512 10-1/2K | 10 | G1/2 | 20,2 | 15,4 | 24,8 | 8 | 25 | 22 | 8 | 39 |
| F6512 12-3/8K | 12 | G3/8 | 19,2 | 18,3 | 20,5 | 7 | 24 | 19 | 9 | 24 |
| F6512 12-1/2K | 12 | G1/2 | 19,2 | 18,3 | 24,8 | 8 | 24,5 | 22 | 9 | 37 |
| F6512 16-1/2K* | 16 | G1/2 | 23,0 | 23,5 | 26,5 | 8 | 33,5 | 24 | - | 49 |
| F6512 16-3/4K* | 16 | G3/4 | 23,0 | 23,5 | 30 | 9 | 29,5 | 24 | - | 58 |

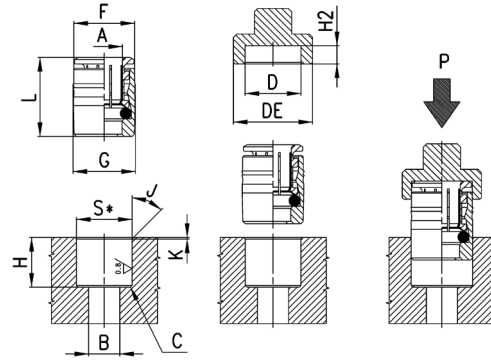
* = Integrated Locking Clip to secure the collet in its position

BSP female connector Mod. F6463K


| Mod. | A | D | C | F | G | L | P [min] | SW | Weight [g] |
|----------------|----|------|------|------|------|------|---------|----|------------|
| F6463 6-1/8K | 6 | G1/8 | 10 | 11,7 | 13 | 26 | 6 | 12 | 14 |
| F6463 6-1/4K | 6 | G1/4 | 11,5 | 11,9 | 16,5 | 27,5 | 7 | 15 | 23 |
| F6463 8-1/8K | 8 | G1/8 | 9,5 | 13,7 | 15,2 | 27 | 6 | 14 | 16 |
| F6463 8-1/4K | 8 | G1/4 | 11,5 | 13,7 | 16,5 | 29 | 7 | 15 | 23 |
| F6463 8-3/8K | 8 | G3/8 | 13 | 13,7 | 20 | 30,5 | 8 | 15 | 29 |
| F6463 10-1/4K | 10 | G1/4 | 11,3 | 15,4 | 18,5 | 31,5 | 7 | 17 | 29 |
| F6463 10-3/8K | 10 | G3/8 | 12,8 | 15,4 | 20 | 33 | 8 | 17 | 34 |
| F6463 10-1/2K | 10 | G1/2 | 16,8 | 15,4 | 24 | 37 | 9,5 | 17 | 44,5 |
| F6463 12-3/8K | 12 | G3/8 | 12,8 | 18,3 | 20,5 | 32 | 8 | 19 | 40 |
| F6463 12-1/2K | 12 | G1/2 | 16,8 | 18,3 | 24 | 36 | 9,5 | 19 | 50,5 |
| F6463 16-1/2K* | 16 | G1/2 | 16,5 | 23,5 | 26,5 | 40 | 9,5 | 24 | 63 |
| F6463 16-3/4K* | 16 | G3/4 | 18,5 | 23,5 | 30 | 42 | 11 | 24 | 77 |

* = Integrated Locking Clip to secure the collet in its position

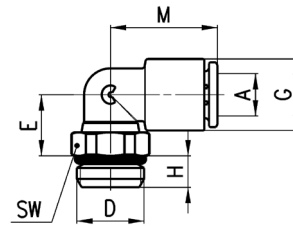
Cartridge Mod. F6700K



S* = for both metallic and synthetic seat

| Mod. | A | B | C | D | DE | F | G | H | H2 [+0,1/0] | J | K | L | P min [Kg] | P max [Kg] | S [+0,01/-0,04] | Weight [g] |
|-----------|----|---|---------|----|----|------|------|------|-------------|-----|-----|------|------------|------------|-----------------|------------|
| F6700 6K | 6 | 4 | 0,5x45° | 12 | 17 | 11,8 | 12,2 | 12 | 3,8 | 15° | 0,5 | 16,5 | 160 | 570 | 11,95 | 8 |
| F6700 8K | 8 | 6 | 0,5x45° | 14 | 19 | 13,8 | 14,2 | 14 | 3,3 | 15° | 0,5 | 18 | 140 | 400 | 13,95 | 11 |
| F6700 10K | 10 | 8 | 0,5x45° | 16 | 21 | 15,8 | 16,2 | 16,5 | 3,5 | 15° | 0,5 | 20,5 | 150 | 650 | 15,95 | 15 |

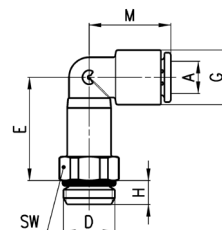
BSP male swivel elbow Mod. F7522K



| Mod. | A | D | E | G | H | M | SW | Weight [g] |
|----------------|----|------|------|------|-----|------|----|------------|
| F7522 6-M5K | 6 | M5 | 9,3 | 11,4 | 3,5 | 18,5 | 9 | 7 |
| F7522 6-1/8K | 6 | G1/8 | 10 | 11,6 | 5 | 18,5 | 12 | 8 |
| F7522 6-1/4K | 6 | G1/4 | 10 | 11,6 | 6 | 18,5 | 14 | 11 |
| F7522 8-1/8K | 8 | G1/8 | 13,5 | 13,9 | 5 | 20,5 | 12 | 11 |
| F7522 8-1/4K | 8 | G1/4 | 12 | 13,9 | 6 | 20,5 | 14 | 13 |
| F7522 8-3/8K | 8 | G3/8 | 12,5 | 13,9 | 7 | 20,5 | 19 | 21 |
| F7522 10-1/4K | 10 | G1/4 | 14,5 | 16,1 | 6 | 24 | 14 | 15 |
| F7522 10-3/8K | 10 | G3/8 | 13,5 | 16,1 | 7 | 24 | 19 | 21 |
| F7522 10-1/2K | 10 | G1/2 | 13,5 | 16,1 | 8 | 24 | 24 | 30 |
| F7522 12-3/8K | 12 | G3/8 | 15 | 20,2 | 7 | 28 | 19 | 25 |
| F7522 12-1/2K | 12 | G1/2 | 15,5 | 20,2 | 8 | 28 | 24 | 34 |
| F7522 16-1/2K* | 16 | G1/2 | 30 | 27 | 8 | 33,5 | 24 | 61 |
| F7522 16-3/4K* | 16 | G3/4 | 24 | 27 | 9 | 33,5 | 30 | 70 |

* = Integrated Locking Clip to secure the collet in its position

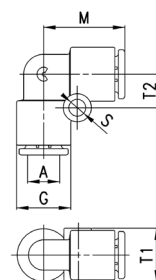
Long BSP male swivel elbow Mod. F7526K



| Mod. | A | D | E | G | H | M | SW | Weight [g] |
|----------------|----|------|------|------|---|------|----|------------|
| F7526 6-1/8K | 6 | G1/8 | 23 | 11,6 | 5 | 18,5 | 12 | 13 |
| F7526 6-1/4K | 6 | G1/4 | 23 | 11,6 | 5 | 18,5 | 14 | 16 |
| F7526 8-1/8K | 8 | G1/8 | 29 | 13,9 | 5 | 20,5 | 12 | 18 |
| F7526 8-1/4K | 8 | G1/4 | 27 | 13,9 | 6 | 20,5 | 14 | 20 |
| F7526 8-3/8K | 8 | G3/8 | 27,7 | 13,9 | 7 | 20,5 | 19 | 30 |
| F7526 10-1/4K | 10 | G1/4 | 32,2 | 15,8 | 6 | 24 | 14 | 28,5 |
| F7526 10-3/8K | 10 | G3/8 | 32,2 | 15,8 | 7 | 24 | 19 | 35 |
| F7526 10-1/2K | 10 | G1/2 | 32,2 | 15,8 | 8 | 24 | 24 | 45 |
| F7526 12-3/8K | 12 | G3/8 | 36,2 | 20 | 7 | 28 | 19 | 41,5 |
| F7526 12-1/2K | 12 | G1/2 | 36,2 | 20 | 8 | 28 | 24 | 49,5 |
| F7526 16-1/2K* | 16 | G1/2 | 58,9 | 27 | 8 | 34 | 24 | 106,5 |
| F7526 16-3/4K* | 16 | G3/4 | 58,9 | 27 | 9 | 34 | 30 | 116 |

* = Integrated Locking Clip to secure the collet in its position

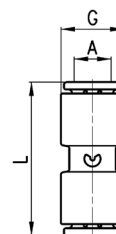
Elbow connector Mod. F7550



| Mod. | A | G | M | S | T1 | T2 | Weight [g] |
|-----------|----|------|------|---|------|-----|------------|
| F7550 6 | 6 | 11,6 | 18,5 | 4 | 11,4 | 7,5 | 6 |
| F7550 8 | 8 | 13,9 | 20,5 | 4 | 13,7 | 8,5 | 9 |
| F7550 10 | 10 | 16,1 | 24 | 4 | 15,8 | 8 | 12 |
| F7550 12 | 12 | 20,2 | 28 | 4 | 9 | 9,6 | 20 |
| F7550 16* | 16 | 27 | 33,5 | - | - | - | 42 |

* = Integrated Locking Clip to secure the collet in its position
 F7550 16 = model without mounting holes

Union connector Mod. F7580

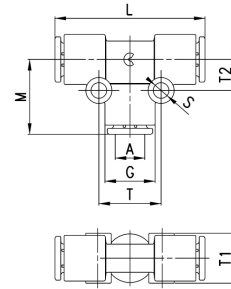


| Mod. | A | G | L | Weight [g] |
|----------|----|------|------|------------|
| F7580 6 | 6 | 11,6 | 31 | 6 |
| F7580 8 | 8 | 13,9 | 33,5 | 9 |
| F7580 10 | 10 | 16,1 | 38,5 | 11 |
| F7580 12 | 12 | 20,2 | 39,5 | 18 |

Tee connector Mod. F7540



| Mod. | A | G | L | M | S | T | T1 | T2 | Weight [g] |
|-----------|----|------|----|------|---|------|------|-----|------------|
| F7540 6 | 6 | 11,6 | 37 | 18,5 | 4 | 15 | 11,4 | 7,5 | 9 |
| F7540 8 | 8 | 13,9 | 41 | 20,5 | 4 | 17 | 13,7 | 8,5 | 14 |
| F7540 10 | 10 | 16,1 | 48 | 24 | 4 | 16 | 15,8 | 8 | 18 |
| F7540 12 | 12 | 20,2 | 56 | 28 | 4 | 19,2 | 9 | 9,6 | 30 |
| F7540 16* | 16 | 27 | 67 | 33,5 | - | - | - | - | 61 |

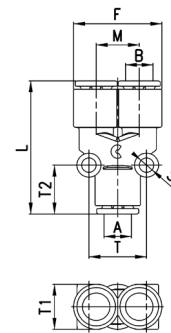


* = Integrated Locking Clip to secure the collet in its position
 F7540 16 = model without mounting holes

Y connector - Reducer Mod. F7560



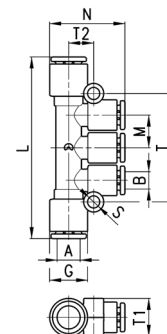
| Mod. | A | B | F | L | M | S | T | T1 | T2 | Weight [g] |
|----------|----|----|------|------|------|---|------|------|------|------------|
| F7560 6 | 6 | 6 | 23 | 35 | 11,4 | 4 | 14,5 | 11,5 | 13,5 | 9 |
| F7560 8 | 8 | 8 | 27,2 | 39,5 | 13,5 | 4 | 17 | 14 | 14,5 | 15 |
| F7560 10 | 10 | 10 | 31,7 | 46 | 15,8 | 4 | 16,5 | 16 | 16,5 | 19 |



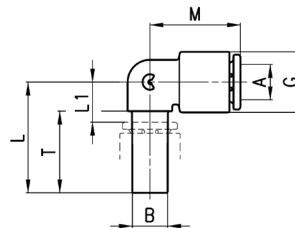
Multi tee reducer Mod. F7545



| Mod. | A | B | G | L | M | N | S | T | T1 | T2 | Weight [g] |
|------------|----|---|------|------|------|------|---|------|------|------|------------|
| F7545 8-6 | 8 | 6 | 13,9 | 64 | 11,5 | 26,5 | 4 | 38,2 | 13,5 | 9 | 18 |
| F7545 10-8 | 10 | 8 | 16,1 | 78,5 | 14,1 | 30 | 4 | 45,8 | 16 | 10,5 | 27 |

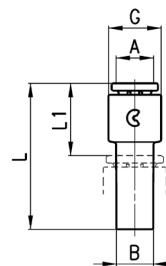


Junction elbow Mod. F7555



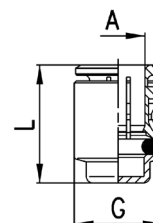
| Mod. | A | B | G | L | L1 | M | T | Weight [g] |
|-------------|----|----|------|------|----|------|------|------------|
| F7555 6-6 | 6 | 6 | 11,6 | 23 | 8 | 18,5 | 17,5 | 4 |
| F7555 8-8 | 8 | 8 | 13,9 | 25 | 9 | 20,5 | 18,5 | 5 |
| F7555 10-10 | 10 | 10 | 16,1 | 28,5 | 10 | 24 | 21 | 8 |
| F7555 12-12 | 12 | 12 | 20,2 | 32 | 13 | 28 | 23 | 12 |

Reducer junction Mod. F7800



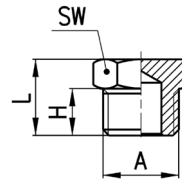
| Mod. | A | B | G | L1 | L | Weight [g] |
|-------------|----|----|------|------|------|------------|
| F7800 4-6 | 4 | 6 | 9,4 | 14,5 | 29,5 | 2 |
| F7800 4-8 | 4 | 8 | 9,4 | 14,5 | 30,5 | 3 |
| F7800 6-8 | 6 | 8 | 11,6 | 15,5 | 31,5 | 4 |
| F7800 6-10 | 6 | 10 | 11,6 | 15,5 | 34 | 4 |
| F7800 6-12 | 6 | 12 | 11,6 | 16,5 | 35,5 | 4 |
| F7800 8-10 | 8 | 10 | 13,9 | 16,5 | 35 | 5 |
| F7800 8-12 | 8 | 12 | 13,9 | 17,5 | 37 | 6 |
| F7800 10-12 | 10 | 12 | 16,1 | 18,5 | 37,5 | 7 |

Female Plug Mod. F6750K



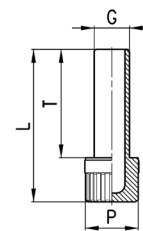
| Mod. | A | G | L | Weight [g] |
|------------|----|------|------|------------|
| F6750 6K | 6 | 11,8 | 17 | 7 |
| F6750 8K | 8 | 13,8 | 18,5 | 9 |
| F6750 10K | 10 | 15,8 | 21 | 12 |
| F6750 12K | 12 | 17,8 | 20 | 15 |
| F6750 16K* | 16 | 23,5 | 24,5 | 26 |

BSP Male Plug Mod. 2611



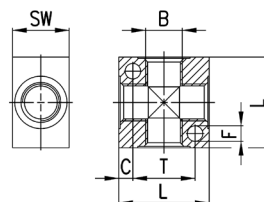
| Mod. | A | H | L | SW | Weight [g] |
|----------|------|----|------|----|------------|
| 2611 M5 | M5 | 4 | 7,5 | 8 | 2 |
| 2611 1/8 | G1/8 | 6 | 10,5 | 13 | 7 |
| 2611 1/4 | G1/4 | 8 | 13 | 17 | 13 |
| 2611 3/8 | G3/8 | 9 | 14 | 19 | 18 |
| 2611 1/2 | G1/2 | 10 | 15,5 | 24 | 31 |
| 2611 1 | G1 | 13 | 19 | 38 | 76 |

Plastic Male Plug Mod. 6900



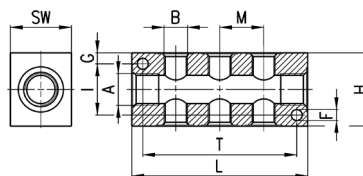
| Mod. | G | L | P | T | Weight [g] |
|---------|----|------|----|------|------------|
| 6900 6 | 6 | 31,5 | 8 | 22,5 | 1 |
| 6900 8 | 8 | 34,5 | 12 | 24,5 | 2 |
| 6900 10 | 10 | 37 | 12 | 27 | 2 |
| 6900 12 | 12 | 40,5 | 16 | 28,5 | 3 |

4 Ways Distribution Block with fixing holes Mod.3033



| Mod. | B | C | F | L | T | SW | Weight [g] |
|----------|------|---|-----|----|----|----|------------|
| 3033 1/8 | G1/8 | 4 | 4,5 | 25 | 17 | 16 | 18 |
| 3033 1/4 | G1/4 | 5 | 5,5 | 32 | 22 | 20 | 35 |
| 3033 3/8 | G3/8 | 7 | 5,5 | 40 | 26 | 25 | 73 |
| 3033 1/2 | G1/2 | 8 | 5,5 | 50 | 34 | 30 | 137 |

Manifold with double lateral outlets Mod. 3043



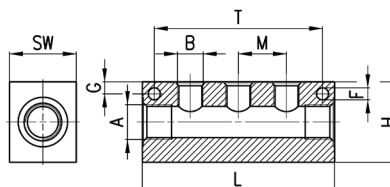
Material:
anodized Aluminium

| Mod. | A | Double lateral outlets | B | F | G | H | I | L | M | T | SW | Weight [g] |
|-----------------|------|------------------------|------|-----|-----|----|----|-----|----|-----|----|------------|
| 3043 1/4-3D-1/8 | G1/4 | 3 | G1/8 | 4,5 | 4,5 | 30 | 21 | 72 | 18 | 63 | 20 | 85 |
| 3043 1/4-4D-1/8 | G1/4 | 4 | G1/8 | 4,5 | 4,5 | 30 | 21 | 90 | 18 | 81 | 20 | 107 |
| 3043 1/4-5D-1/8 | G1/4 | 5 | G1/8 | 4,5 | 4,5 | 30 | 21 | 108 | 18 | 99 | 20 | 128 |
| 3043 1/4-6D-1/8 | G1/4 | 6 | G1/8 | 4,5 | 4,5 | 30 | 21 | 126 | 18 | 117 | 20 | 151 |
| 3043 3/8-3D-1/4 | G3/8 | 3 | G1/4 | 5,5 | 6 | 40 | 28 | 92 | 24 | 75 | 25 | 177 |
| 3043 3/8-4D-1/4 | G3/8 | 4 | G1/4 | 5,5 | 6 | 40 | 28 | 116 | 24 | 99 | 25 | 224 |
| 3043 3/8-5D-1/4 | G3/8 | 5 | G1/4 | 5,5 | 6 | 40 | 28 | 140 | 24 | 123 | 25 | 270 |
| 3043 3/8-6D-1/4 | G3/8 | 6 | G1/4 | 5,5 | 6 | 40 | 28 | 164 | 24 | 147 | 25 | 315 |
| 3043 1/2-3D-3/8 | G1/2 | 3 | G3/8 | 5,5 | 6,5 | 50 | 37 | 104 | 26 | 85 | 30 | 287 |
| 3043 1/2-4D-3/8 | G1/2 | 4 | G3/8 | 5,5 | 6,5 | 50 | 37 | 130 | 26 | 111 | 30 | 356 |
| 3043 1/2-5D-3/8 | G1/2 | 5 | G3/8 | 5,5 | 6,5 | 50 | 37 | 156 | 26 | 137 | 30 | 427 |
| 3043 1/2-6D-3/8 | G1/2 | 6 | G3/8 | 5,5 | 6,5 | 50 | 37 | 182 | 26 | 163 | 30 | 495 |

FITTINGS, CONNECTORS AND TUBES

Manifold with lateral outlets Mod. 3053

10



Material:
anodized Aluminium

| Mod. | A | Single lateral outlets | B | F | G | H | L | M | T | SW | Weight [g] |
|-----------------|------|------------------------|------|-----|-----|----|-----|----|-----|----|------------|
| 3053 1/4-3L-1/8 | G1/4 | 3 | G1/8 | 4,5 | 4,5 | 30 | 72 | 18 | 63 | 20 | 92 |
| 3053 1/4-4L-1/8 | G1/4 | 4 | G1/8 | 4,5 | 4,5 | 30 | 90 | 18 | 81 | 20 | 116 |
| 3053 1/4-5L-1/8 | G1/4 | 5 | G1/8 | 4,5 | 4,5 | 30 | 108 | 18 | 99 | 20 | 140 |
| 3053 1/4-6L-1/8 | G1/4 | 6 | G1/8 | 4,5 | 4,5 | 30 | 126 | 18 | 117 | 20 | 164 |
| 3053 3/8-3L-1/4 | G3/8 | 3 | G1/4 | 5,5 | 6 | 40 | 92 | 24 | 75 | 25 | 191 |
| 3053 3/8-4L-1/4 | G3/8 | 4 | G1/4 | 5,5 | 6 | 40 | 116 | 24 | 99 | 25 | 243 |
| 3053 3/8-5L-1/4 | G3/8 | 5 | G1/4 | 5,5 | 6 | 40 | 140 | 24 | 123 | 25 | 294 |
| 3053 3/8-6L-1/4 | G3/8 | 6 | G1/4 | 5,5 | 6 | 40 | 164 | 24 | 147 | 25 | 345 |
| 3053 1/2-3L-3/8 | G1/2 | 3 | G3/8 | 5,5 | 6,5 | 50 | 104 | 26 | 85 | 30 | 313 |
| 3053 1/2-4L-3/8 | G1/2 | 4 | G3/8 | 5,5 | 6,5 | 50 | 130 | 26 | 111 | 30 | 395 |
| 3053 1/2-5L-3/8 | G1/2 | 5 | G3/8 | 5,5 | 6,5 | 50 | 156 | 26 | 137 | 30 | 474 |
| 3053 1/2-6L-3/8 | G1/2 | 6 | G3/8 | 5,5 | 6,5 | 50 | 182 | 26 | 163 | 30 | 551 |