

BRASS RAPID PUSH-ON FITTINGS FOR PLASTIC TUBES

SERIES 1000

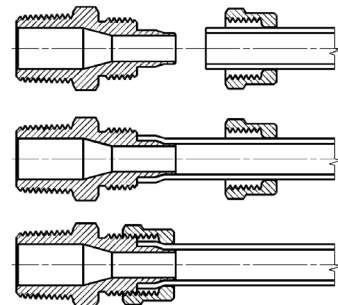
Tube external diameters: 5/3, 6/4, 8/6, 10/8, 12/10, 15/12,5 mm
 Fittings threads: metric (M5, M6, M12x1, M12x1,25),
 BSP (G1/8, G1/4, G3/8, G1/2), BSPT (R1/8, R1/4, R3/8, R1/2)

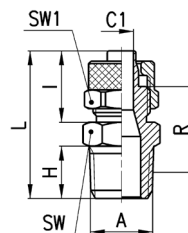


Series 1000 rapid push-on fittings can be easily installed. The push-in locking nuts can be tightened both manually and with a spanner even in case of stiff tubes like the PA or the Hytrel Polyester. The special shape of the guiding cone ensures that the tube cannot be accidentally cut.

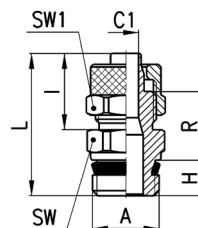
General Data

Diameter	5/3 - 6/4 - 8/6 - 10/8 - 12/10 - 15/12,5 mm
Threads	GAS conical ISO 7 (BSPT) GAS cylindrical ISO 228 (BSP) M5 - M6 NPT and metric (available on request)
Temperature [°C]	-20°C + 80°C NOTE: for a better use of the fitting we recommend to check the tubing specifications.
Tube to connect	PA polyethylene braided PVC rilsan PU, Hytrel Polyester
Medium	compressed air low pressure fluids
Materials	body and nut: nickel-plated brass O-ring: NBR thread seals: PTFE, PA, AL
Working pressure	the nominal pressure of the fittings is always higher than the pressure of the tube



BRASS RAPID PUSH-ON FITTINGS FOR PLASTIC TUBES
SERIES 1000 - DIMENSIONS
Male straight Mod. 1510


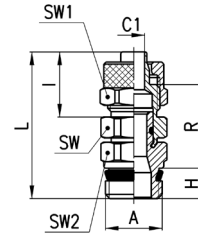
Mod.	Tube	A	C1	H	I	L	R	SW	SW1	Weight [g]
1510 5/3-1/8	5/3	R1/8	2	7,5	12,5	24,5	14,5	12	8	10
1510 6/4-1/8	6/4	R1/8	3	7,5	15	27	16	12	12	15
1510 6/4-1/4	6/4	R1/4	3	11	15	31	18,5	14	12	19
1510 6/4-3/8	6/4	R3/8	3	11,5	15	31,5	18,5	17	12	22
1510 6/4-1/2	6/4	R1/2	3	14	15	34,5	20	22	12	38
1510 6/4-M12x1,25	6/4	M12x1,25	3	10	15	30	18	13	12	17
1510 8/6-1/8	8/6	R1/8	5	7,5	15	27	16	13	14	19
1510 8/6-1/4	8/6	R1/4	5	11	15	31	18,5	14	14	20
1510 8/6-3/8	8/6	R3/8	5	11,5	15	31,5	18,5	17	14	25
1510 8/6-1/2	8/6	R1/2	5	14	15	34,5	20	22	14	39
1510 10/8-1/8	10/8	R1/8	6,5	7,5	16,5	28,5	16,5	14	16	24
1510 10/8-1/4	10/8	R1/4	6,5	11	16,5	32,5	19	14	16	24
1510 10/8-3/8	10/8	R3/8	6,5	11,5	16,5	33	19	17	16	27
1510 10/8-1/2	10/8	R1/2	6,5	14	16,5	36	20,5	22	16	42
1510 12/10-3/8	12/10	R3/8	8,5	11,5	18	34,5	19	17	19	35
1510 12/10-1/2	12/10	R1/2	8,5	14	18	37,5	20,5	22	19	49
1510 15/12,5-1/2	15/12,5	R1/2	11	14	20	39,5	21	22	22	55

Male stud Mod. 1511


Mod.	Tube	A	C1	H	I	L	R	SW	SW1	Weight [g]
1511 5/3-M5	5/3	M5	2	4	12,5	21	10,5	8	8	5
1511 5/3-M6	5/3	M6	2	4	12,5	21	10,5	9	8	5
1511 5/3-1/8	5/3	G1/8	2	5,5	12,5	23,8	11,8	12	8	10
1511 6/4-M5	6/4	M5	3	4	13,5	22	10,5	8	9	6
1511 6/4-M6	6/4	M6	3	4	13,5	22	10,5	9	9	7
1511 6/4-1/8	6/4	G1/8	3	5,5	15	26,3	13,3	12	12	15
1511 6/4-1/4	6/4	G1/4	3	7	15	28	13,5	14	12	16
1511 6/4-3/8	6/4	G3/8	3	8	15	29,3	13,8	19	12	27
1511 8/6-1/8	8/6	G1/8	5	5,5	15	26,3	13,3	12	14	17
1511 8/6-1/4	8/6	G1/4	5	7	15	28	13,5	14	14	18
1511 8/6-3/8	8/6	G3/8	5	8	15	29,3	13,8	19	14	27
1511 10/8-1/8	10/8	G1/8	6,5	5,5	16,5	27,8	13,8	14	16	23
1511 10/8-1/4	10/8	G1/4	6,5	7	16,5	29,5	14	14	16	25
1511 10/8-3/8	10/8	G3/8	6,5	8	16,5	30,8	14,3	19	16	30
1511 10/8-1/2	10/8	G1/2	6,5	9	16,5	32,5	15	22	16	36
1511 12/10-3/8	12/10	G3/8	8,5	8	18	32,3	14,3	19	19	39
1511 12/10-1/2	12/10	G1/2	8,5	9	18	34	15	22	19	42
1511 15/12,5-1/2	15/12,5	G1/2	11	9	20	36	15,5	22	22	52

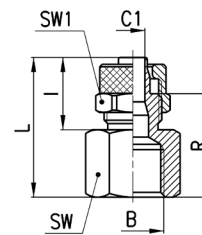
● = with O-Ring

Swivel male straight Mod. 1560



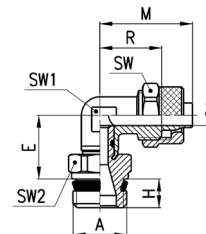
Mod.	Tube	A	C1	H	I	L	R	SW	SW1	SW2	Weight [g]
1560 6/4-1/8	6/4	G1/8	3	5,5	15	31	18	12	12	12	19
1560 6/4-1/4	6/4	G1/4	3	7	15	32,5	18	12	12	14	25
1560 8/6-1/8	8/6	G1/8	5	5,5	15	32	19	13	14	12	21
1560 8/6-1/4	8/6	G1/4	5	7	15	33,5	19	13	14	14	26
1560 10/8-1/4	10/8	G1/4	6,5	7	16,5	34,5	19	14	16	14	27
1560 10/8-3/8	10/8	G3/8	6,5	8	16,5	36	19,5	14	16	19	38
1560 12/10-3/8	12/10	G3/8	8,5	8	18	38	20	17	19	19	46

Female straight Mod. 1463

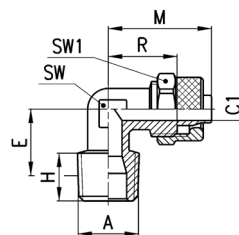


Mod.	Tube	B	C1	I	L	R	SW	SW1	Weight [g]
1463 5/3-1/8	5/3	G1/8	2	12,5	22,5	16	13	8	10
1463 6/4-1/8	6/4	G1/8	3	15	25	17,5	13	12	14
1463 6/4-1/4	6/4	G1/4	3	15	26,5	19	17	12	21
1463 6/4-3/8	6/4	G3/8	3	15	27,5	20	20	12	25
1463 8/6-1/8	8/6	G1/8	5	15	25	17,5	13	14	16
1463 8/6-1/4	8/6	G1/4	5	15	26,5	19	17	14	22
1463 8/6-3/8	8/6	G3/8	5	15	27,5	20	20	14	26
1463 10/8-1/8	10/8	G1/8	6,5	16,5	21,5	13	14	16	19
1463 10/8-1/4	10/8	G1/4	6,5	16,5	28	19,5	17	16	28
1463 10/8-3/8	10/8	G3/8	6,5	16,5	29	20,5	20	16	31
1463 10/8-1/2	10/8	G1/2	6,5	16,5	33	24,5	24	16	43
1463 12/10-3/8	12/10	G3/8	8,5	18	30,5	20,5	20	19	37

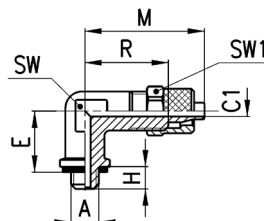
Swivel male elbow Mod. 1541



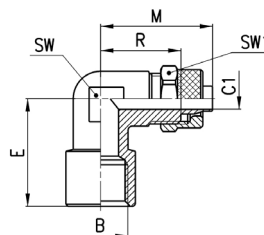
Mod.	Tube	A	C1	E	H	M	R	SW	SW1	SW2	Weight [g]
1541 6/4-1/8	6/4	G1/8	3	15	5,5	22,5	15	12	10	12	22
1541 6/4-1/4	6/4	G1/4	3	15	7	22,5	15	12	10	14	27
1541 8/6-1/8	8/6	G1/8	5	15	5,5	22,5	15	14	10	12	23
1541 8/6-1/4	8/6	G1/4	5	15	7	22,5	15	14	10	14	28
1541 10/8-1/4	10/8	G1/4	6,5	16	7	25,5	17	16	12	14	35

BRASS RAPID PUSH-ON FITTINGS FOR PLASTIC TUBES
SERIES 1000 - DIMENSIONS
Fixed male elbow Mod. 1500


Mod.	Tube	A	C1	E	H	M	R	SW	SW1	Weight [g]
1500 5/3-1/8	5/3	R1/8	2	13	7,5	21,5	15	8	8	11
1500 6/4-1/8	6/4	R1/8	3	13	7,5	22,5	15	8	12	15
1500 6/4-1/4	6/4	R1/4	3	15,5	11	22,5	15	10	12	21
1500 6/4-3/8	6/4	R3/8	3	17	11,5	23,5	16	12	12	27
1500 6/4-M12x1,25	6/4	M12x1,25	3	14	10	22,5	15	10	12	18
1500 8/6-1/8	8/6	R1/8	5	13	7,5	22,5	15	10	14	19
1500 8/6-1/4	8/6	R1/4	5	15,5	11	22,5	15	10	14	21
1500 8/6-3/8	8/6	R3/8	5	17	11,5	24	16	12	14	29
1500 8/6-1/2	8/6	R1/2	5	21,5	14	27	19	16	14	48
1500 10/8-1/8	10/8	R1/8	6,5	15	7,5	25,5	17	12	16	29
1500 10/8-1/4	10/8	R1/4	6,5	17	11	25,5	17	12	16	29
1500 10/8-3/8	10/8	R3/8	6,5	16,5	11,5	25,5	17	12	16	33
1500 10/8-1/2	10/8	R1/2	6,5	21	14	28,5	20	16	16	58
1500 12/10-3/8	12/10	R3/8	8,5	19	11,5	30	20	14	19	44
1500 12/10-1/2	12/10	R1/2	8,5	21	14	30,5	20,5	16	19	59
1500 15/12,5-1/2	15/12,5	R1/2	11	21	14	34	22,5	16	22	67

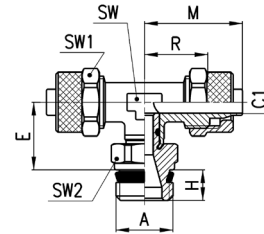
Fixed male elbow Mod. 1501 5/3-M5


Mod.	Tube	A	C1	E	H	M	R	SW	SW1	Weight [g]
1501 5/3-M5	5/3	M5	2	11	4	21,5	15	8	8	10

Fixed female elbow Mod. 1493


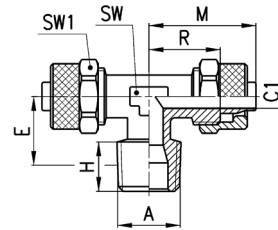
Mod.	Tube	B	C1	E	M	R	SW	SW1	Weight [g]
1493 6/4-1/8	6/4	G1/8	3	19	22,5	15	10	12	20
1493 6/4-1/4	6/4	G1/4	3	23,5	26	18,5	14	12	34
1493 8/6-1/8	8/6	G1/8	5	19	22,5	15	10	14	21
1493 8/6-1/4	8/6	G1/4	5	23,5	26	19	14	14	34
1493 10/8-1/4	10/8	G1/4	6,5	23,5	27,5	18	14	16	39
1493 12/10-3/8	12/10	G3/8	8,5	26	30,5	20,5	16	19	53

Swivel male branch tee Mod. 1431



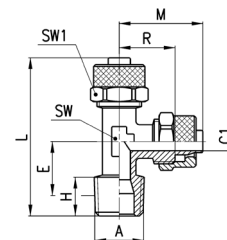
Mod.	Tube	A	C1	E	H	M	R	SW	SW1	SW2	Weight [g]
1431 6/4-1/8	6/4	G1/8	3	15	5,5	22,5	15	10	12	12	32
1431 6/4-1/4	6/4	G1/4	3	15	7	22,5	15	10	12	14	38
1431 8/6-1/8	8/6	G1/8	5	15	5,5	22,5	15	10	14	12	36
1431 8/6-1/4	8/6	G1/4	5	15	7	22,5	15	10	14	14	41
1431 10/8-1/4	10/8	G1/4	6,5	16	7	25,5	17	12	16	14	54

Male branch tee Mod. 1410

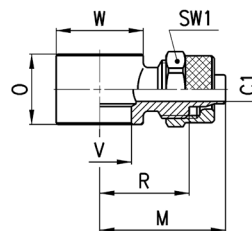


Mod.	Tube	A	C1	E	H	M	R	SW	SW1	Weight [g]
1410 5/3-1/8	5/3	R1/8	2	12,5	7,5	21,5	15	8	8	16
1410 6/4-1/8	6/4	R1/8	3	12,5	7,5	22,5	15	8	12	25
1410 6/4-1/4	6/4	R1/4	3	15,5	11	22,5	15	10	12	32
1410 8/6-1/8	8/6	R1/8	5	13	7,5	22,5	15	10	14	31
1410 8/6-1/4	8/6	R1/4	5	15,5	11	22,5	15	10	14	35
1410 10/8-1/8	10/8	R1/8	6,5	15	7,5	25,5	17	12	16	47
1410 10/8-1/4	10/8	R1/4	6,5	17	11	25,5	17	12	16	50
1410 10/8-1/2	10/8	R1/2	6,5	21,5	14	28,5	20	16	16	80
1410 12/10-3/8	12/10	R3/8	8,5	19	11,5	30	20	14	19	77
1410 12/10-1/2	12/10	R1/2	8,5	21,5	14	30,5	20,5	16	19	92
1410 15/12,5-1/2	15/12,5	R1/2	11	21,5	14	34	22,5	16	22	107

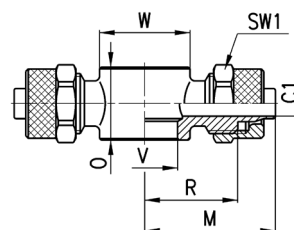
Male run tee Mod. 1420



Mod.	Tube	A	C1	E	H	L	M	R	SW	SW1	Weight [g]
1420 5/3-1/8	5/3	R1/8	2	12,5	7,5	37,5	21,5	15	8	8	15
1420 6/4-1/8	6/4	R1/8	3	12,5	7,5	38,5	22,5	15	8	12	23
1420 6/4-1/4	6/4	R1/4	3	15,5	11	43	22,5	15	10	12	29
1420 8/6-1/8	8/6	R1/8	5	13	7,5	39	22,5	15	10	14	31
1420 8/6-1/4	8/6	R1/4	5	15,5	11	43	22,5	15	10	14	34
1420 10/8-1/8	10/8	R1/8	6,5	15	7,5	43,5	25,5	17	12	16	46
1420 10/8-1/4	10/8	R1/4	6,5	17	11	47	25,5	17	12	16	50

BRASS RAPID PUSH-ON FITTINGS FOR PLASTIC TUBES
SERIES 1000 - DIMENSIONS
Single banjo body Mod. 1610


Mod.	Tube	C1	M	O	R	V	W	SW1	Weight [g]	Assembled with Mod.
1610 5/3-M5	5/3	2	17	9	10,5	5,1	∅ 9	8	8	1631, 1635
1610 5/3-M6	5/3	2	17	9	10,5	5,1	∅ 9	8	7	SCU, SVU, SCO...
1610 5/3-1/8	5/3	2	22,5	14,5	16	9,8	∅ 14	8	13	1631, 1635, SCU, SVU, SCO...
1610 6/4-M5	6/4	3	18	9	10,5	5,1	∅ 9	9	8	1631, 1635
1610 6/4-M6	6/4	2	18	9	10,5	5,1	∅ 9	9	8	SCU, SVU, SCO...
1610 6/4-1/8	6/4	3	24	14,5	16,5	9,8	∅ 14	12	18	1631, 1635, SCU, SVU, SCO...
1610 6/4-1/4	6/4	3	26	14,5	18,5	13,2	∅ 18	12	21	1631, 1635, SCU, SVU, SCO...
1610 6/4-3/8	6/4	3	28	14,5	20,5	16,7	∅ 21	12	22	1631, 1635, SCU, SVU, SCO...
1610 8/6-1/8	8/6	5	24	14,5	16,5	9,8	∅ 14	14	19	1631, 1635, SCU, SVU, SCO...
1610 8/6-1/4	8/6	5	26	14,5	18,5	13,2	∅ 18	14	22	1631, 1635, SCU, SVU, SCO...
1610 8/6-3/8	8/6	5	28	14,5	20,5	16,7	∅ 21	14	25	1631, 1635, SCU, SVU, SCO...
1610 10/8-1/8	10/8	6,5	25	14,5	16,5	9,8	∅ 14	16	25	1635, SCU, SVU, SCO...
1610 10/8-1/4	10/8	6,5	27	14,5	18,5	13,2	∅ 18	16	24	1635, SCU, SVU, SCO...
1610 10/8-3/8	10/8	6,5	29,5	14,5	21	16,7	∅ 21	16	28	1635, SCU, SVU, SCO...
1610 10/8-1/2	10/8	6,5	32	14,5	23,5	21	∅ 26	16	35	1635
1610 12/10-3/8	12/10	8	31,5	14,5	21,5	16,7	∅ 21	19	36	1635, SCU, SVU, SCO...
1610 12/10-1/2	12/10	8,5	33,5	14,5	23,5	21	∅ 26	19	40	1635
1610 15/12,5-1/2	15/12,5	11	36,5	14,5	25	21	∅ 26	22	48	1635

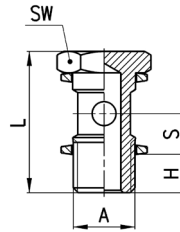
Double banjo body Mod. 1620


Mod.	Tube	C1	M	O	R	V	W	SW1	Weight [g]	Assembled with Mod.
1620 6/4-M5	6/4	3	18	9	10,5	5,1	∅ 9	9	12	1631, 1635
1620 6/4-1/8	6/4	3	24	14,5	16,5	9,8	∅ 14	12	29	1631, 1635, SCU, SVU, SCO...
1620 6/4-1/4	6/4	3	26	14,5	18,5	13,2	∅ 18	12	31	1631, 1635, SCU, SVU, SCO...
1620 8/6-1/8	8/6	5	24	14,5	16,5	9,8	∅ 14	14	31	1631, 1635, SCU, SVU, SCO...
1620 8/6-1/4	8/6	5	26	14,5	18,5	13,2	∅ 18	14	34	1631, 1635, SCU, SVU, SCO...

Single banjo bolt Mod. 1631 01



Assembled with adjustable fittings
 Mod.6610, Mod.6620, Mod.1610, Mod.1620, Mod.2023, Mod.1170.



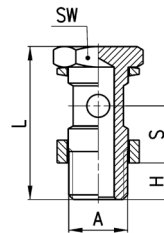
Mod.	A	H	L	S	SW	Weight [g]
1631 01-M5	M5	4	18	5,5	8	3
1631 01-1/8	G1/8	6	27	8,5	14	13
1631 01-1/4	G1/4	8	29,5	8,5	17	24
1631 01-3/8	G3/8	8	30	8,5	19	35
1631 01-1/2	G1/2	9	31	8,5	27	63

* = zinc-plated steel

Single extended banjo bolt Mod. 1635 01



Assembled with adjustable fittings Mod.6610, Mod.6620, Mod.1610, Mod.1620, Mod.2023, Mod.1170.



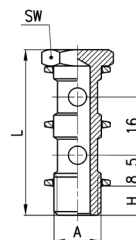
Mod.	A	H	L	S	SW	Weight [g]
1635 01-1/8	G1/8	6	31	12,5	14	15
1635 01-1/4	G1/4	8	33,5	12,5	17	27
1635 01-3/8	G3/8	8	34	12,5	19	37
1635 01-1/2	G1/2	9	35	12,5	27	71
1635 01-M12x1,25	M12x1,25	8	33,5	12,5	17	27
1635 01-M12x1,5	M12x1,5	8	33,5	12,5	17	27

* = models that can be assembled with 1/4 banjo fittings

Double banjo bolt Mod. 1631 02

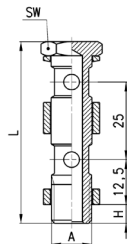


Assembled with adjustable fittings Mod.6610, Mod.6620, Mod.1610, Mod.1620, Mod.2023, Mod.1170.



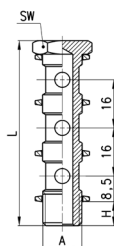
Mod.	A	H	L	SW	Weight [g]
1631 02-1/8	G1/8	6	43	14	18
1631 02-1/4	G1/4	8	45,5	17	33
1631 02-3/8	G3/8	8	46	19	48

BRASS RAPID PUSH-ON FITTINGS FOR PLASTIC TUBES
SERIES 1000 - DIMENSIONS
Double extended banjo bolt Mod. 1635 02

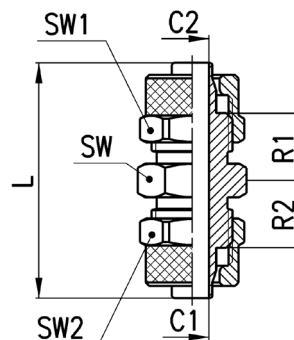
 Assembled with adjustable fittings [Mod.6610](#), [Mod.6620](#), [Mod.1610](#), [Mod.1620](#), [Mod.2023](#), [Mod.1170](#).


Mod.	A	H	L	SW	Weight [g]
1635 02-1/8	G1/8	6	56	14	26
1635 02-1/4	G1/4	8	58,5	17	33
1635 02-3/8	G3/8	8	59	19	64
1635 02-1/2	G1/2	9	60	27	111

Triple banjo bolt Mod. 1631 03

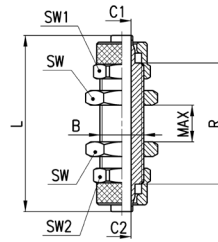
 Assembled with adjustable [Mod.6610](#), [Mod.6620](#), [Mod.1610](#), [Mod.1620](#), [Mod.2023](#), [Mod.1170](#).


Mod.	A	H	L	SW	Weight [g]
1631 03-1/8	G1/8	6	59	14	24
1631 03-1/4	G1/4	8	61,5	17	42
1631 03-3/8	G3/8	8	62	19	62

Equal union Mod. 1580


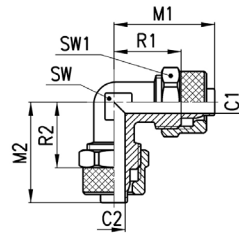
Mod.	Tube	C1	C2	L	R1	R2	SW	SW1	SW2	Weight [g]
1580 5/3	5/3	2	2	28,5	7,5	7,5	8	8	8	8
1580 6/4	6/4	3	3	34,5	10	10	12	12	12	22
1580 8/6	8/6	5	5	34,5	9,75	9,75	13	14	14	28
1580 10/8	10/8	6,5	6,5	38	10,5	10,5	14	16	16	38
1580 12/10	12/10	8,5	8,5	41	10,5	10,5	17	19	19	55
1580 15/12,5	15/12,5	11	11	45	11	11	22	22	22	80
1580 8/6-6/4	8/6-6/4	5	3	34,5	9,75	9,75	13	12	14	24
1580 10/8-6/4	10/8-6/4	6,5	3	36,5	10,5	10	14	12	16	31

Equal and unequal bulkhead union Mod. 1590



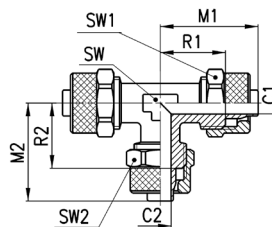
Mod.	Tube	B	C1	C2	L	R	MAX	SW	SW1	SW2	Weight [g]
1590 5/3	5/3	M7x0,75	2	2	40	27	9	8	8	8	12
1590 6/4	6/4	M10x1	3	3	48	33	14	14	12	12	33
1590 8/6	8/6	M12x1	5	5	48	33	12	17	14	14	43
1590 10/8	10/8	M14x1	6,5	6,5	48	31	10	17	16	16	52
1590 12/10	12/10	M16x1	8,5	8,5	53	33	10	19	19	19	71
1590 6/4-5/3	6/4-5/3	M10x1	3	2	48	34	14	14	12	12	33
1590 8/6-6/4	8/6-6/4	M12x1	5	3	48	33	12	17	14	14	44

Equal union elbow Mod. 1550

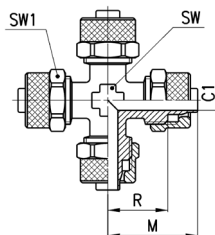


Mod.	Tube	C1	C2	M1	M2	R1	R2	SW	SW1	Weight [g]
1550 6/4	6/4	3	3	22,5	22,5	15	15	8	12	21
1550 8/6	8/6	5	5	22,5	22,5	15	15	10	14	27
1550 10/8	10/8	6,5	6,5	25,5	25,5	17	17	12	16	40
1550 12/10	12/10	8,5	8,5	30	30	20	20	14	19	61
1550 15/12,5	15/12,5	11	11	34	34	22,5	22,5	16	22	88

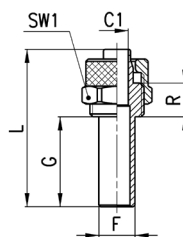
Equal and unequal union tee Mod. 1540



Mod.	Tube	C1	C2	M1	M2	R1	R2	SW	SW1	SW2	Weight [g]
1540 5/3	5/3	2	2	21,5	21,5	15	15	8	8	8	17
1540 6/4	6/4	3	3	22,5	22,5	15	15	8	12	12	31
1540 8/6	8/6	5	5	22,5	22,5	15	15	10	14	14	39
1540 10/8	10/8	6,5	6,5	25,5	25,5	17	17	12	16	16	58
1540 12/10	12/10	8,5	8,5	30	30	20	20	14	19	19	90
1540 15/12,5	15/12,5	11	11	34	34	22,5	22,5	16	22	22	128
1540 8/6-6/4	8/6-6/4	5	3	22,5	22,5	15	15	10	14	12	38
1540 10/8-6/4	10/8-6/4	6,5	3	25,5	23,5	17	16,5	12	16	12	50
1540 10/8-8/6	10/8-8/6	6,5	5	25,5	24	17	16,5	12	16	14	53

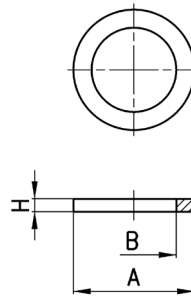
BRASS RAPID PUSH-ON FITTINGS FOR PLASTIC TUBES
SERIES 1000 - DIMENSIONS
Equal union cross Mod. 1600


Mod.	Tube	C1	M	R	SW	SW1	Weight [g]
1600 6/4	6/4	3	22,5	15	8	12	41
1600 8/6	8/6	5	22,5	15	10	14	52

Tube stem adaptor Mod. 1470


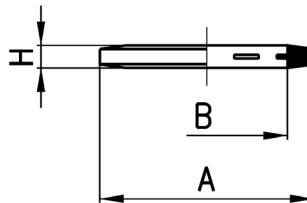
Mod.	Tube	F	C1	G	L	R	SW1	Weight [g]
1470 6/4	6/4	6	3	20	35	7,5	12	11
1470 8/6	8/6	8	5	20	35	7,5	14	15

Aluminium Washer Mod. 2651



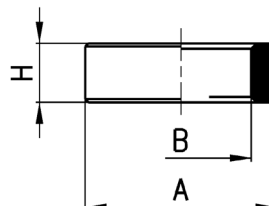
Mod.	A	B	H	Weight [g]
2651 1/8	14	9,8	1,5	1
2651 1/4	18	13,2	1,5	1
2651 3/8	22	16,7	1,5	1
2651 1/2	26	20,9	1,5	1
2651 1	38,5	33,4	1,5	2

Notched Plastic Washer Mod. 2661

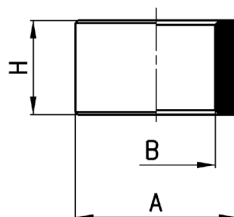


Mod.	A	B	H	Weight [g]
2661 M3	4,9	2,8	0,7	1
2661 M5	8	5,2	1	1
2661 M6	9	6,2	1	1
2661 1/8	14	10,2	1,9	1
2661 1/4	18	13,5	1,9	1
2661 3/8	21	16,5	2,1	1
2661 1/2	26	21,2	1,9	1

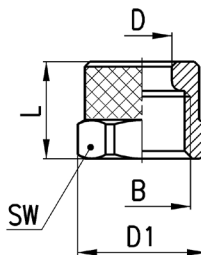
Plastic Washer Mod. 2665



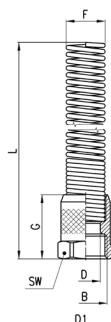
Mod.	A	B	H	Weight [g]
2665 1/8	14	9,8	5,5	1
2665 1/4	18	13,2	5,4	1
2665 3/8	21	16,8	5,5	1
2665 1/2	26	21,1	5,5	1

High Plastic Washer Mod. 2669


Mod.	A	B	H	Weight [g]
2669 1/8	14	9,8	10	1
2669 1/4	18	13,2	10	2
2669 3/8	21	16,8	10	2
2669 1/2	26	21,1	10	2

Blocking nut Mod. 1703


Mod.	Tube	B	D	D1	L	SW1	Weight [g]
1703 5/3-M7x0,75	5/3	M7x0,75	5,1	8,8	8,5	8	1
1703 6/4-M8x0,75	6/4	M8x0,75	6,1	9,8	8,5	9	2
1703 6/4-M10x1	6/4	M10x1	6,1	13,3	10	12	4
1703 8/6-M12x1	8/6	M12x1	8,2	15,5	10	14	5
1703 10/8-M14x1	10/8	M14x1	10,15	17,5	13	16	8
1703 12/10-M16x1	12/10	M16x1	12,2	21	13,5	19	12
1703 15/12,5-M20x1	15/12,5	M20x1	15,2	24,5	16	22	15

Blocking nut with metal spring Mod. 1723


Mod.	Tube	B	F	D	D1	G	L	SW	Weight [g]
1723 6/4-M10x1	6/4	M10x1	8,9	6,1	13,3	18	90,5	12	15
1723 8/6-M12x1	8/6	M12x1	10,9	8,2	15,5	18	94,5	14	23
1723 10/8-M14x1	10/8	M14x1	12,5	10,15	17,5	22	96,5	16	29
1723 12/10-M16x1	12/10	M16x1	15,5	12,2	21	23,5	108	19	46
1723 15/12,5-M20x1	15/12,5	M20x1	18,5	15,2	24,5	28	120	22	57