

## Rod Lock - Series RL

Product code: RLC-41-63

Datasheet creation date: 19/05/2026 08:45

Check the most updated document online [click here](#)

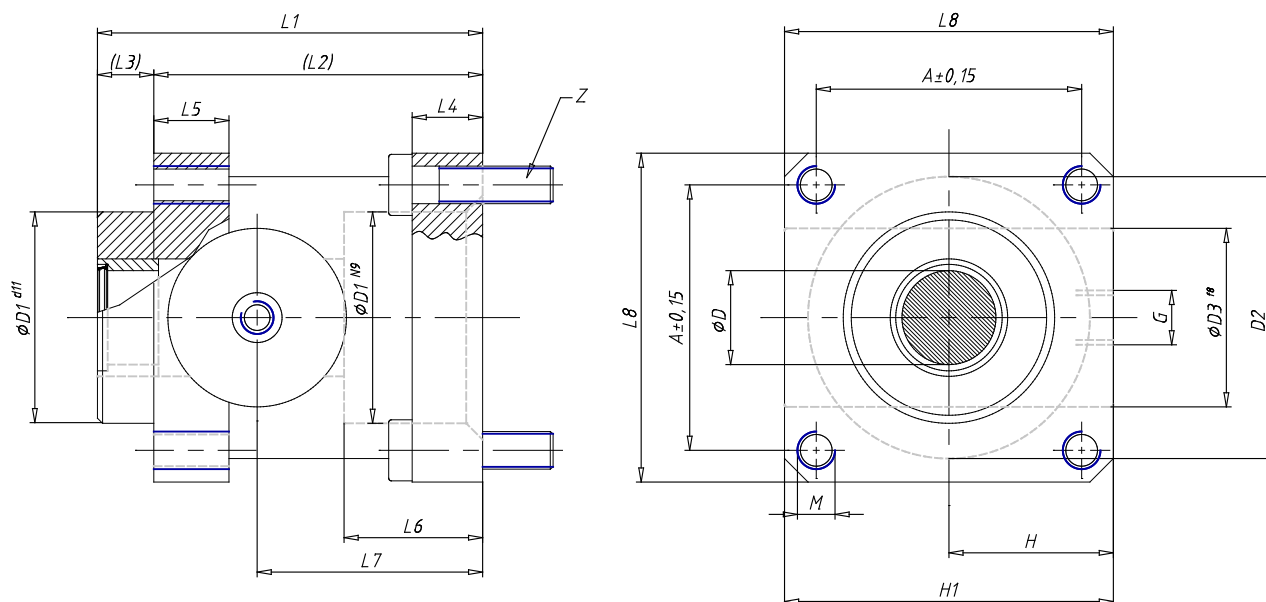


### TECHNICAL DATA

<b>Mod.</b>	RLC-41-63
<b>Series</b>	RCL= standard, complete with cartridge and housing
<b>Cylinder Series</b>	41
<b>Diameter (mm)</b>	63

## Rod Lock - Series RL

Product code: RLC-41-63



### DIMENSIONS

D (mm)	20
A (mm)	56.5
D1 (mm)	45.0
D2 (mm)	60
D3 (mm)	38
G	G1/8
H (mm)	40.0
L (mm)	0
L1 (mm)	82
L2 (mm)	70
L3 (mm)	12
L4 (mm)	15
L5 (mm)	16
L6 (mm)	29.5
L7 (mm)	49.5
L8 (mm)	70
M	M8
H1 (mm)	75.0
Z	M8x30