

Rod Lock - Series RL

Product code: RLC-24-25

Datasheet creation date: 19/05/2026 08:45

Check the most updated document online [click here](#)

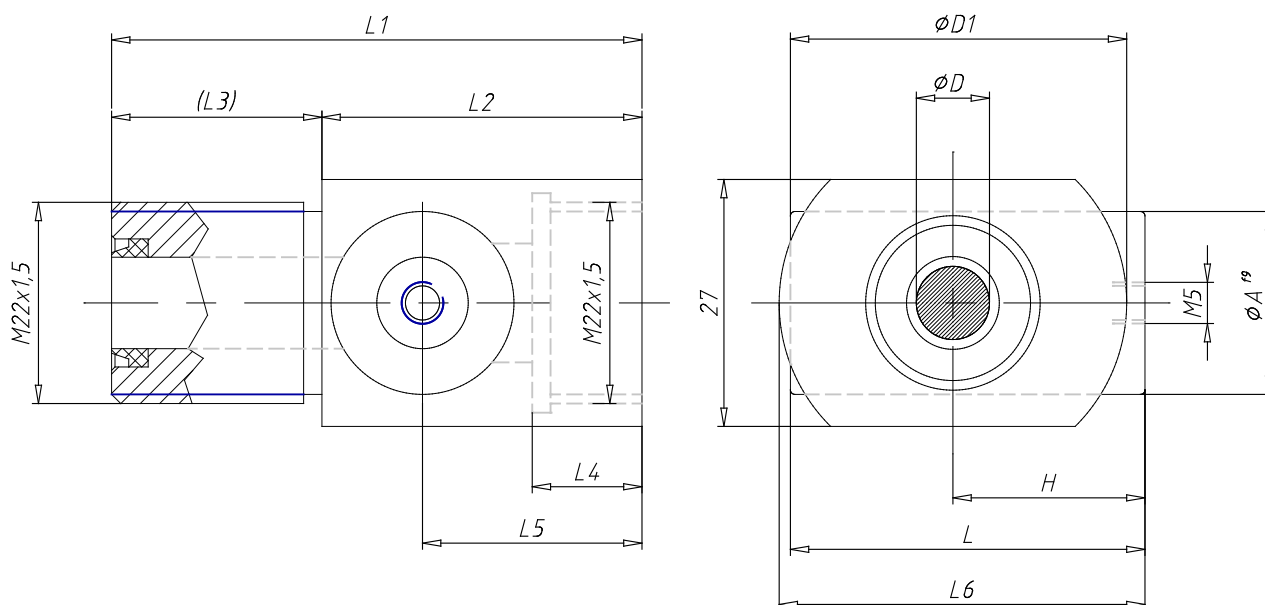


TECHNICAL DATA

| | |
|------------------------|--|
| Mod. | RLC-24-25 |
| Series | RCL= standard, complete with cartridge and housing |
| Cylinder Series | 24 |
| Diameter (mm) | 25 |

Rod Lock - Series RL

Product code: RLC-24-25



DIMENSIONS

| | |
|---------|------|
| D (mm) | 10 |
| A (mm) | 20.0 |
| D1 (mm) | 38.0 |
| D2 (mm) | 0 |
| D3 (mm) | 0 |
| G | G1/8 |
| H (mm) | 21.0 |
| L (mm) | 40 |
| L1 (mm) | 58 |
| L2 (mm) | 35 |
| L3 (mm) | 23 |
| L4 (mm) | 12 |
| L5 (mm) | 24 |
| L6 (mm) | 40.0 |
| L7 (mm) | 0.0 |
| L8 (mm) | 0 |
| M | - |
| H1 (mm) | 0.0 |
| Z | - |