

## Series QX - Twin Cylinders

Product code: QXB3A020A100

Datasheet creation date: 19/05/2026 09:27

Check the most updated document online [click here](#)

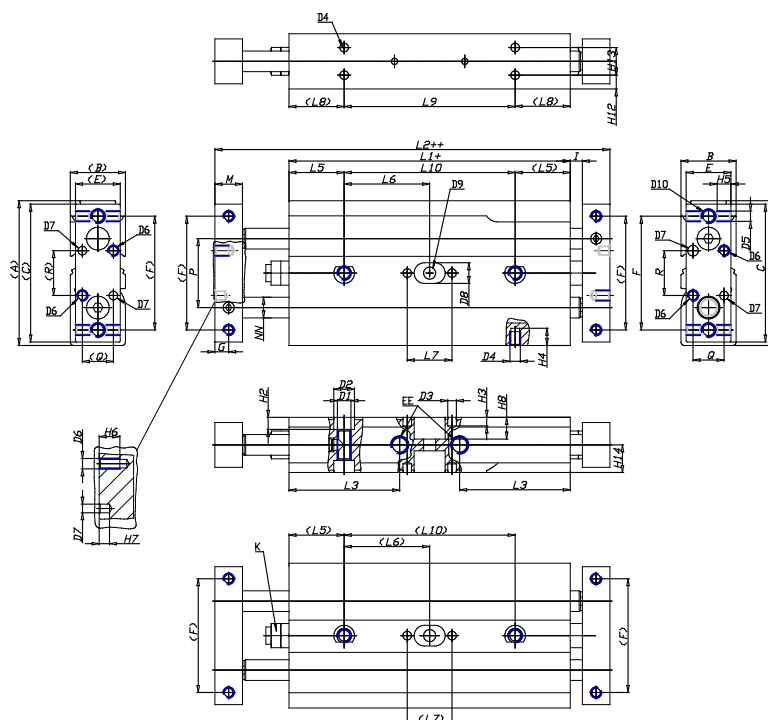


### TECHNICAL DATA

<b>Series (mm)</b>	QX
<b>Version (mm)</b>	B = linear ball bearings
<b>Operation</b>	3 = through-rod (double-flange), radial pressure supply
<b>Materials (mm)</b>	A = anodized aluminium body, rolled stainless steel 303 piston rod
<b>Diameter (mm)</b>	20
<b>Construction (mm)</b>	A = standard
<b>Cylinder stroke (mm)</b>	100
<b>Certifications (mm)</b>	= standard

## Series QX - Twin Cylinders

Product code: QXB3A020A100



### DIMENSIONS

A (mm)	62
B (mm)	25
C (mm)	60
E (mm)	22
F (mm)	50
G (mm)	6
I (mm)	4.5
M (mm)	12
Q (mm)	16
R (mm)	18
L1 (mm)	98.0
L2 (mm)	131.0
L3 (mm)	39.5
L4 (mm)	9.0
L5 (mm)	25
L6 (mm)	74.0
L7 (mm)	20
L8 (mm)	30
L9 (mm)	138.0
L10 (mm)	148.0
L11 (mm)	57.2
H2 (mm)	5.5
H3 (mm)	4.0

H4 (mm)	4.5
H5 (mm)	6.0
H6 (mm)	8
H7 (mm)	4
H8 (mm)	0.0
H10 (mm)	10.5
H11 (mm)	20.2
H12 (mm)	8.0
H13 (mm)	9
H14 (mm)	12.5
D1	M6
D2 (mm)	9.5
D3 (mm)	4.0
D4 (mm)	M4
D5	M4
D6	M4
D7 (mm)	4.0
D8 (mm)	0
D9 (mm)	0.0
D10	M5
NN (mm)	10
EE	M5
J (mm)	0.0