

## Cylinders with integrated guide - Series QCT QCB

Product code: QCT2A040A200

Datasheet creation date: 19/05/2026 09:04

Check the most updated document online [click here](#)

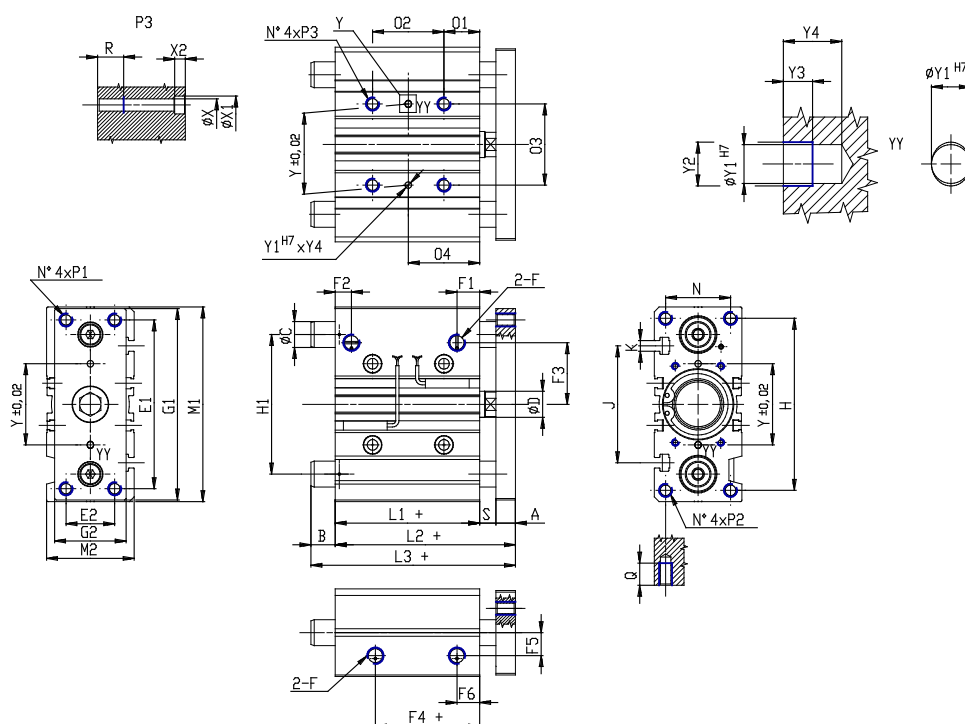


### TECHNICAL DATA

|                              |   |
|------------------------------|---|
| <b>SERIE (Series)</b>        | QC  |
| <b>VERSION (Version)</b>     | T = sintered bronze bushes  |
| <b>FUNZ (Operation)</b>      | 2 = double acting   |
| <b>MAT (Materials)</b>       | A = anodized aluminium body, rolled stainless steel 303 piston rod, rolled stainless steel 420B columns for QTC |
| <b>PHY (Diameter / mm)</b>   | 40  |
| <b>TYP (Construction)</b>    | A = standard  |
| <b>HUB (Stroke / mm)</b>     | 200   |
| <b>ATEX (Certifications)</b> | = standard  |

## Cylinders with integrated guide - Series QCT QCB

Product code: QCT2A040A200



### DIMENSIONS

|                |       |
|----------------|-------|
| <b>L3 (mm)</b> | 91.5  |
| <b>C (mm)</b>  | 20    |
| <b>B (mm)</b>  | 25.5  |
| <b>O2 (mm)</b> | 124   |
| <b>O4 (mm)</b> | 84    |
| <b>A (mm)</b>  | 12    |
| <b>D (mm)</b>  | 16    |
| <b>E1 (mm)</b> | 104   |
| <b>E2 (mm)</b> | 30    |
| <b>F</b>       | G 1/8 |
| <b>F1 (mm)</b> | 13.0  |
| <b>F2 (mm)</b> | 12.0  |
| <b>F3 (mm)</b> | 38.0  |
| <b>F4 (mm)</b> | 13.0  |
| <b>F5 (mm)</b> | 18.0  |
| <b>F6 (mm)</b> | 13.0  |
| <b>G1 (mm)</b> | 118   |
| <b>G2 (mm)</b> | 45    |
| <b>H (mm)</b>  | 106   |
| <b>H1 (mm)</b> | 86    |
| <b>L1 (mm)</b> | 44.0  |
| <b>L2 (mm)</b> | 66.0  |
| <b>M1 (mm)</b> | 120   |

|                   |         |
|-------------------|---------|
| <b>M2 (mm)</b>    | 54      |
| <b>N (mm)</b>     | 40      |
| <b>O1 (mm)</b>    | 22      |
| <b>O3 (mm)</b>    | 50      |
| <b>P1</b>         | M8x1.25 |
| <b>P2</b>         | M8x1.25 |
| <b>P3</b>         | M8x1.25 |
| <b>Q (mm)</b>     | 20      |
| <b>R (mm)</b>     | 16      |
| <b>heavy (mm)</b> | 10      |
| <b>Y (mm)</b>     | 50      |
| <b>Y1 (mm)</b>    | 4       |
| <b>Y2 (mm)</b>    | 4.5     |
| <b>Y3 (mm)</b>    | 3       |
| <b>Y4 (mm)</b>    | 6       |
| <b>X (mm)</b>     | 6.5     |
| <b>X1 (mm)</b>    | 11      |
| <b>X2 (mm)</b>    | 6.5     |
| <b>J (mm)</b>     | 72      |
| <b>K</b>          | M6      |