

Take-off blocks - Series MX

Product code: MX3-1-B01

Datasheet creation date: 19/05/2026 17:40

Check the most updated document online [click here](#)

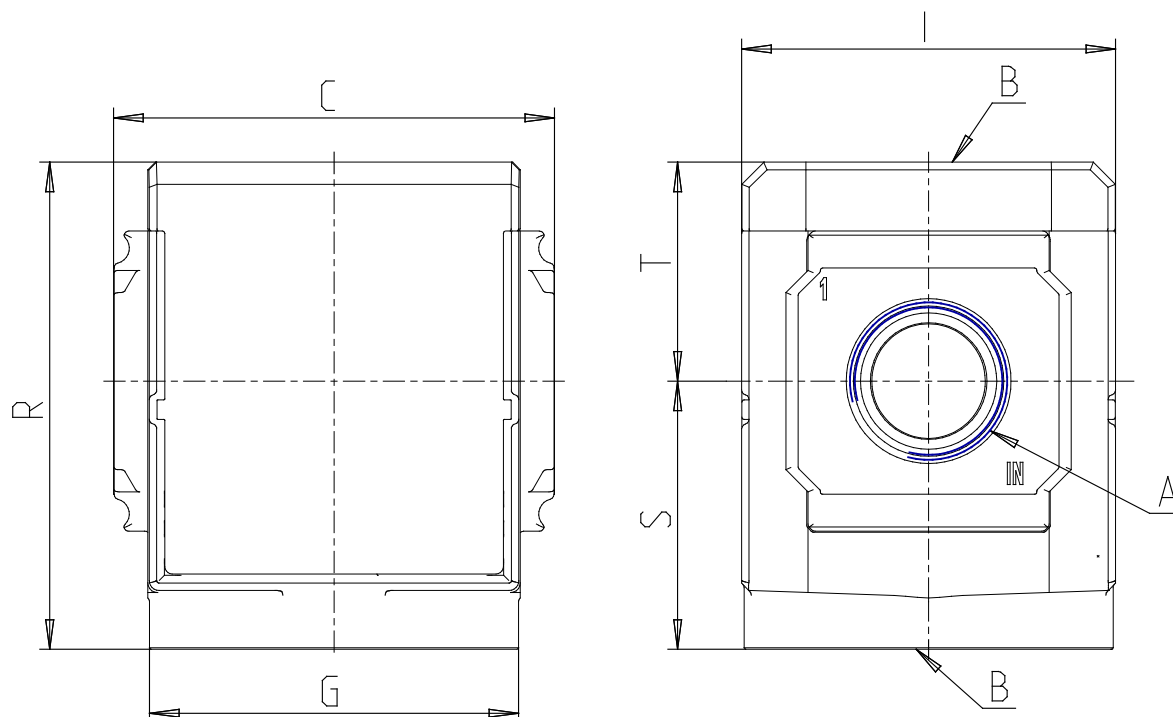


TECHNICAL DATA

Series	MX
Size	3
PORTS (IN - OUT)	1 = G1
Take-off blocks	B
Design type	01 = with no return valve [VNR]
Flow direction	= from left to right (standard)

Take-off blocks - Series MX

Product code: MX3-1-B01



DIMENSIONS

A	G1
B (bar)	G1/8
C (mm)	89.5
G (mm)	75.0
I (mm)	76
M (mm)	48.0
R (mm)	102
S (mm)	57.5
T (mm)	44.5
Weight (kg)	0.7