

## Wide Opening Parallel Gripper - Series CGLN

Product code: CGLN-25-120

Datasheet creation date: 19/05/2026 08:47

Check the most updated document online [click here](#)

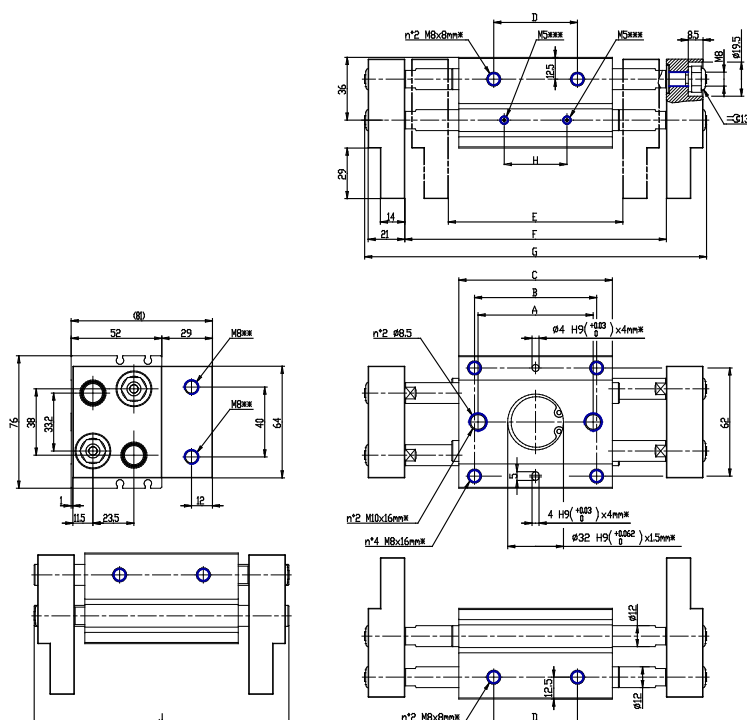


### TECHNICAL DATA

<b>Mod.</b>	CGLN-25-120
<b>Bore (mm)</b>	25
<b>Stroke (mm)</b>	120

## Wide Opening Parallel Gripper - Series CGLN

Product code: CGLN-25-120



### DIMENSIONS

<b>A (mm)</b>	138
<b>B (mm)</b>	142
<b>C (mm)</b>	160
<b>D (mm)</b>	120
<b>E (mm)</b>	200
<b>F (mm)</b>	320
<b>J (mm)</b>	282
<b>G (mm)</b>	366
<b>H (mm)</b>	108
<b>Frequency (1/min)</b>	40
<b>Weight (g)</b>	2655