

2/2 and 3/2-way solenoid valves - Mod. A32 - A33

Product code: A331-1C2

Datasheet creation date: 19/05/2026 08:46

Check the most updated document online [click here](#)

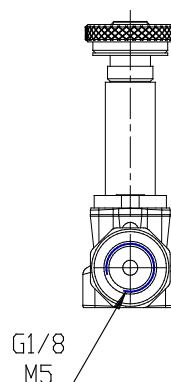
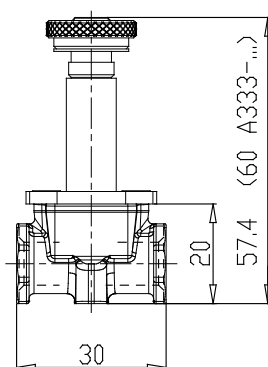
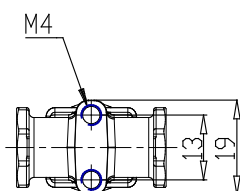


TECHNICAL DATA

| | |
|------------------------------------|---|
| SERIE (Series) | A |
| CORPO (Body design) | 3 = corpo filettato |
| NUMEROVIE (Number of ports) | 3 = 3 vie |
| FUNZIONE (Function) | 1 = NC - normalmente chiusa |
| CONNESSIONI (Connections) | 1 = G1/8 |
| DIAMETRO (Nominal diameter) | C = Ø 1.2 - 1.4 - 1.5 mm |
| MATERIALE (Body material) | 2 = ottone nichelato - ottone brunito - alluminio |

2/2 and 3/2-way solenoid valves - Mod. A32 - A33

Product code: A331-1C2



DIMENSIONS

| | |
|------------------------------------|--|
| SERIE (Series) | A |
| CORPO (Body design) | 3 = corpo filettato |
| NUMEROVIE (Number of ports) | 3 = 3 vie |
| FUNZIONE (Function) | 1 = NC - normalmente chiusa |
| CONNESSIONI (Connections) | 1 = G1/8 |
| DIAMETRO (Nominal diameter) | C = Ø 1.2 - 1.4 - 1.5 mm |
| MATERIALE (Body material) | 2 = ottone nichelato - ottone brunito - alluminio |