

## 2/2 and 3/2-way solenoid valves - Mod. A32 - A33

Product code: A331-0C2

Datasheet creation date: 19/05/2026 18:21

Check the most updated document online [click here](#)

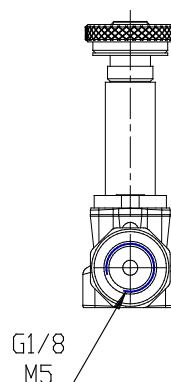
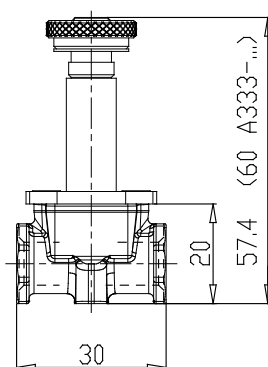
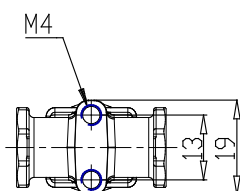


### TECHNICAL DATA

<b>SERIE (Series)</b>	A
<b>CORPO (Body design)</b>	3 = corpo filettato
<b>NUMEROVIE (Number of ports)</b>	3 = 3 vie
<b>FUNZIONE (Function)</b>	1 = NC - normalmente chiusa
<b>CONNESSIONI (Connections)</b>	0 = M5
<b>DIAMETRO (Nominal diameter)</b>	C = Ø 1.2 - 1.4 - 1.5 mm
<b>MATERIALE (Body material)</b>	2 = ottone nichelato - ottone brunito - alluminio

## 2/2 and 3/2-way solenoid valves - Mod. A32 - A33

Product code: A331-0C2



### DIMENSIONS

<b>SERIE (Series)</b>	A
<b>CORPO (Body design)</b>	3 = corpo filettato
<b>NUMEROVIE (Number of ports)</b>	3 = 3 vie
<b>FUNZIONE (Function)</b>	1 = NC - normalmente chiusa
<b>CONNESSIONI (Connections)</b>	0 = M5
<b>DIAMETRO (Nominal diameter)</b>	C = Ø 1.2 - 1.4 - 1.5 mm
<b>MATERIALE (Body material)</b>	2 = ottone nichelato - ottone brunito - alluminio