

2/2 and 3/2-way solenoid valves - Mod. A32 - A33

Product code: A321-1E2

Datasheet creation date: 19/05/2026 08:47

Check the most updated document online [click here](#)

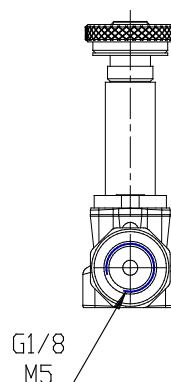
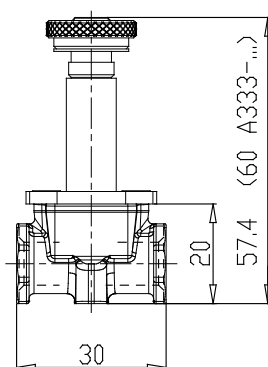
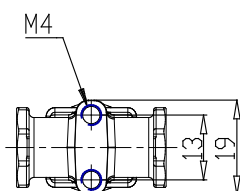


TECHNICAL DATA

SERIE (Series)	A
CORPO (Body design)	3 = corpo filettato
NUMEROVIE (Number of ports)	2 = 2 vie
FUNZIONE (Function)	1 = NC - normalmente chiusa
CONNESSIONI (Connections)	1 = G1/8
DIAMETRO (Nominal diameter)	E = Ø 2.5 mm
MATERIALE (Body material)	2 = ottone nichelato - ottone brunito - alluminio

2/2 and 3/2-way solenoid valves - Mod. A32 - A33

Product code: A321-1E2



DIMENSIONS

SERIE (Series)	A
CORPO (Body design)	3 = corpo filettato
NUMEROVIE (Number of ports)	2 = 2 vie
FUNZIONE (Function)	1 = NC - normalmente chiusa
CONNESSIONI (Connections)	1 = G1/8
DIAMETRO (Nominal diameter)	E = Ø 2.5 mm
MATERIALE (Body material)	2 = ottone nichelato - ottone brunito - alluminio