

Stainless steel Cylinders (DIN/ISO 6431) - Series 90

Product code: 90M2A080A0080

Datasheet creation date: 19/05/2026 15:54

Check the most updated document online [click here](#)

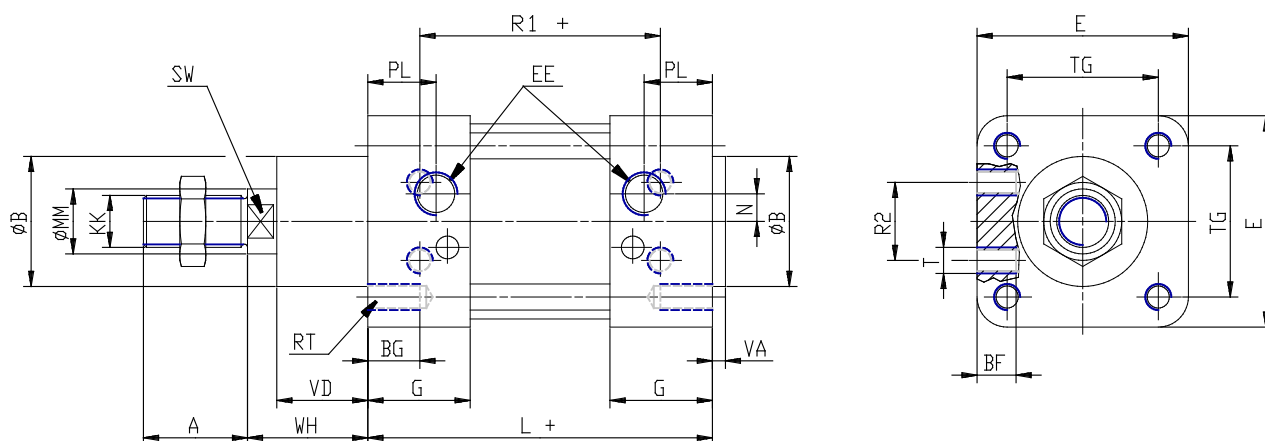


TECHNICAL DATA

Series	90
Version	M = standard magnetic
Operation	2 = double-acting (front and rear cush.)
Materials	A = stainless steel AISI 316 (SS 2343), seals NBR
Diameter (mm)	80
Construction	A = standard
Stroke (mm)	80
rod seals in viton	-
Rod length (mm)	0

Stainless steel Cylinders (DIN/ISO 6431) - Series 90

Product code: 90M2A080A0080



DIMENSIONS

A (mm)	40
B (mm)	45
BG (mm)	16
BF (mm)	15
E (mm)	95
EE	G3/8
G (mm)	36.0
KK	M20x1,5
L (mm)	128
MM (mm)	25
N (mm)	8.5
PL (mm)	23
RT	M10
R1 (mm)	92
R2 (mm)	34
SW (mm)	21
T	M10
TG (mm)	72.0
VA (mm)	4
VD (mm)	34
WH (mm)	46
ZM (mm)	220