

Cylinders Series 42 - Series 42

Product code: 42M2N063A0100

Datasheet creation date: 19/05/2026 12:43

Check the most updated document online [click here](#)

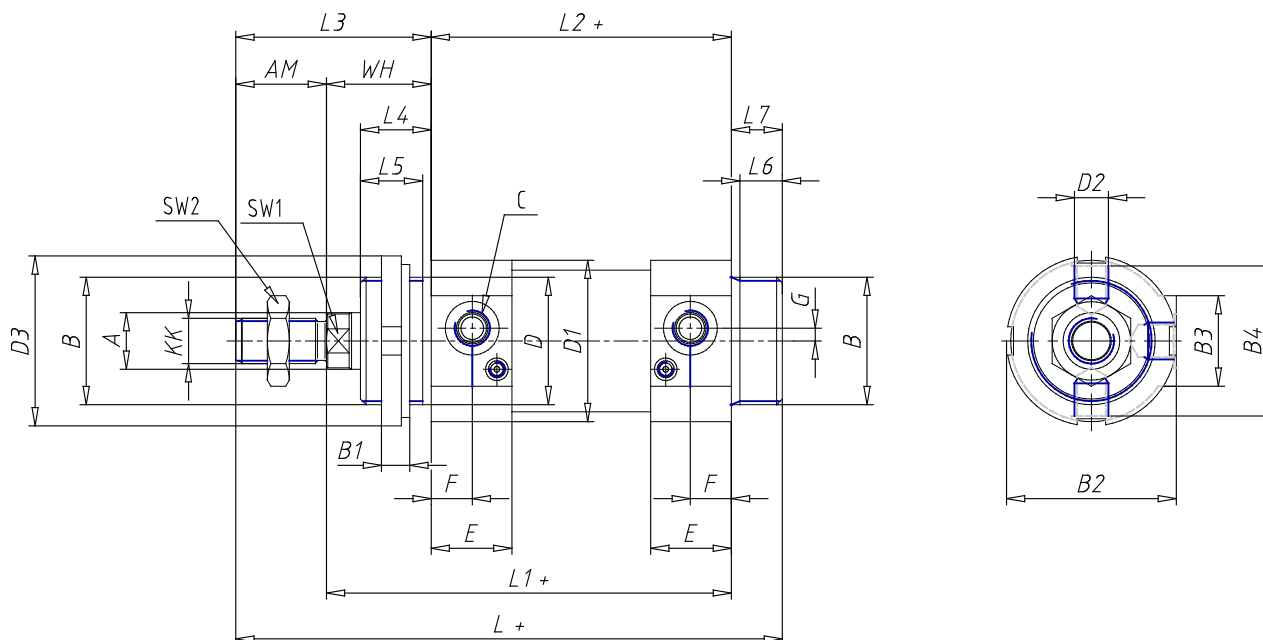


TECHNICAL DATA

Series	42
Diameter (mm)	63
Version	M = standard magnetic
Operation	2 = double-acting (front and rear cushioning)
Materials	N = rod stainless steel AISI 420B; tube stainless steel AISI 304; NBR seals
Construction	A = standard (screw with ring V+ lock for nut for rod U)
Stroke (mm)	100
Rod length (mm)	0
Rod length 2 (mm)	0
Certifications	= standard

Cylinders Series 42 - Series 42

Product code: 42M2N063A0100



DIMENSIONS

Ø A (mm)	20
KK	M16x1.5
B	M45x1.5
B1 (mm)	10
B2 (mm)	70.5
B3 (mm)	46.5
B4 (mm)	66
C	G3/8
Ø D (mm)	45
D1 (mm)	70
D2	M14x1.5
D3 (mm)	60
E (mm)	35.0
F (mm)	15.5
G (mm)	7.0
SW1 (mm)	17
SW2 (mm)	24
AM (mm)	32
WH (mm)	37
L (mm)	208
L1 (mm)	158
L2 (mm)	121
L3 (mm)	69

L4 (mm)	25
L5 (mm)	22
L6 (mm)	15
L7 (mm)	18
Cushion stroke front spring	17
Cushion stroke rear spring	16