

Cylinders Series 42 - Series 42

Product code: 42M2N050A0160

Datasheet creation date: 19/05/2026 12:31

Check the most updated document online [click here](#)

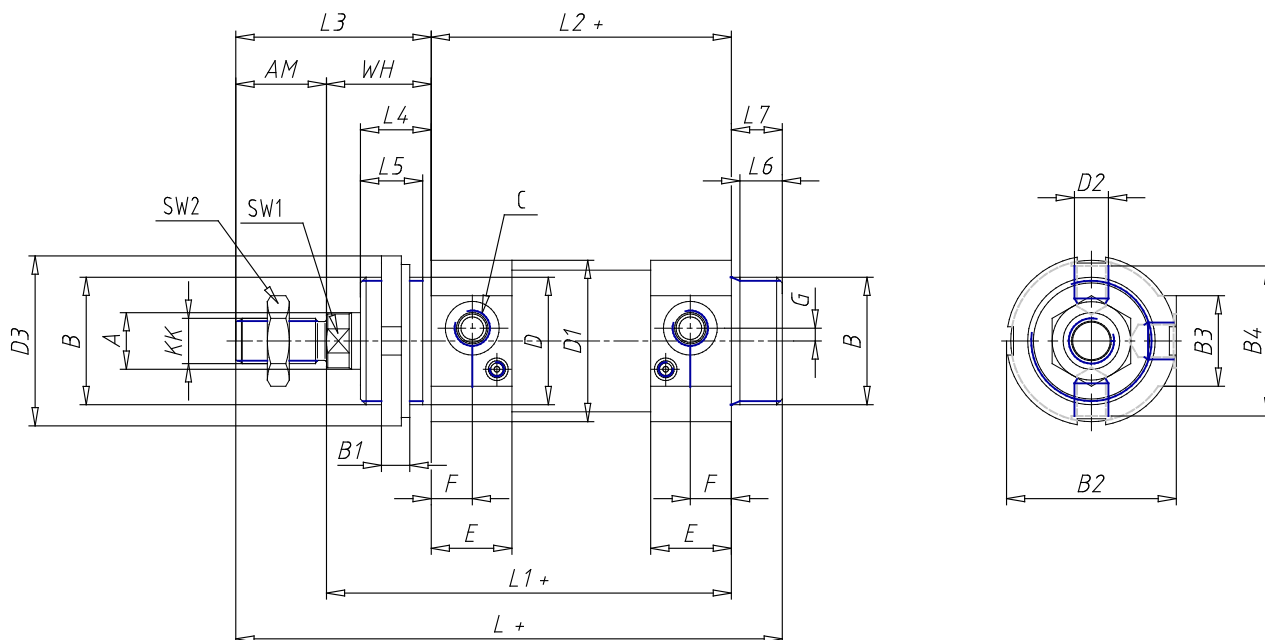


TECHNICAL DATA

Series	42
Diameter (mm)	50
Version	M = standard magnetic
Operation	2 = double-acting (front and rear cushioning)
Materials	N = rod stainless steel AISI 420B; tube stainless steel AISI 304; NBR seals
Construction	A = standard (screw with ring V+ lock for nut for rod U)
Stroke (mm)	160
Rod length (mm)	0
Rod length 2 (mm)	0
Certifications	= standard

Cylinders Series 42 - Series 42

Product code: 42M2N050A0160



DIMENSIONS

Ø A (mm)	20
KK	M16x1.5
B	M45x1.5
B1 (mm)	10
B2 (mm)	58.5
B3 (mm)	32.0
B4 (mm)	54
C	G1\4
Ø D (mm)	45
D1 (mm)	57
D2	M12x1.5
D3 (mm)	60
E (mm)	28.5
F (mm)	14.5
G (mm)	4.5
SW1 (mm)	17
SW2 (mm)	24
AM (mm)	32
WH (mm)	37
L (mm)	193
L1 (mm)	143
L2 (mm)	106
L3 (mm)	69

L4 (mm)	25
L5 (mm)	22
L6 (mm)	15
L7 (mm)	18
Cushion stroke front spring	15
Cushion stroke rear spring	14