

Cylinders Series 42 - Series 42

Product code: 42M2N040A0200

Datasheet creation date: 19/05/2026 08:40

Check the most updated document online [click here](#)

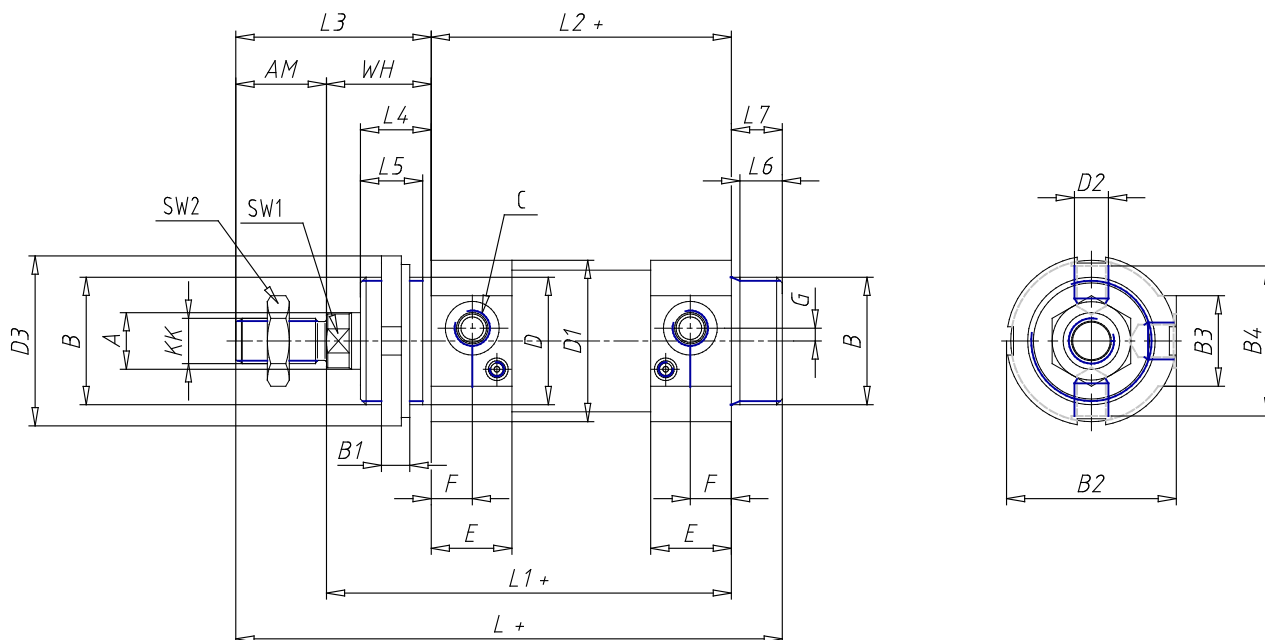


TECHNICAL DATA

Series	42
Diameter (mm)	40
Version	M = standard magnetic
Operation	2 = double-acting (front and rear cushioning)
Materials	N = rod stainless steel AISI 420B; tube stainless steel AISI 304; NBR seals
Construction	A = standard (screw with ring V+ lock for nut for rod U)
Stroke (mm)	200
Rod length (mm)	0
Rod length 2 (mm)	0
Certifications	= standard

Cylinders Series 42 - Series 42

Product code: 42M2N040A0200



DIMENSIONS

Ø A (mm)	16
KK	M12x1.25
B	M38x1.5
B1 (mm)	10
B2 (mm)	50.0
B3 (mm)	30.0
B4 (mm)	43
C	G1\4
Ø D (mm)	38
D1 (mm)	46
D2	M10x1
D3 (mm)	50
E (mm)	29.0
F (mm)	15.0
G (mm)	5.0
SW1 (mm)	13
SW2 (mm)	19
AM (mm)	24
WH (mm)	30
L (mm)	175
L1 (mm)	135
L2 (mm)	105
L3 (mm)	54

L4 (mm)	22
L5 (mm)	19
L6 (mm)	13
L7 (mm)	16
Cushion stroke front spring	20
Cushion stroke rear spring	17