

2 x 3/2-way solenoid valve, G1/8 - Series 3

Product code: 398D-E15-02

Datasheet creation date: 19/05/2026 17:01

Check the most updated document online [click here](#)

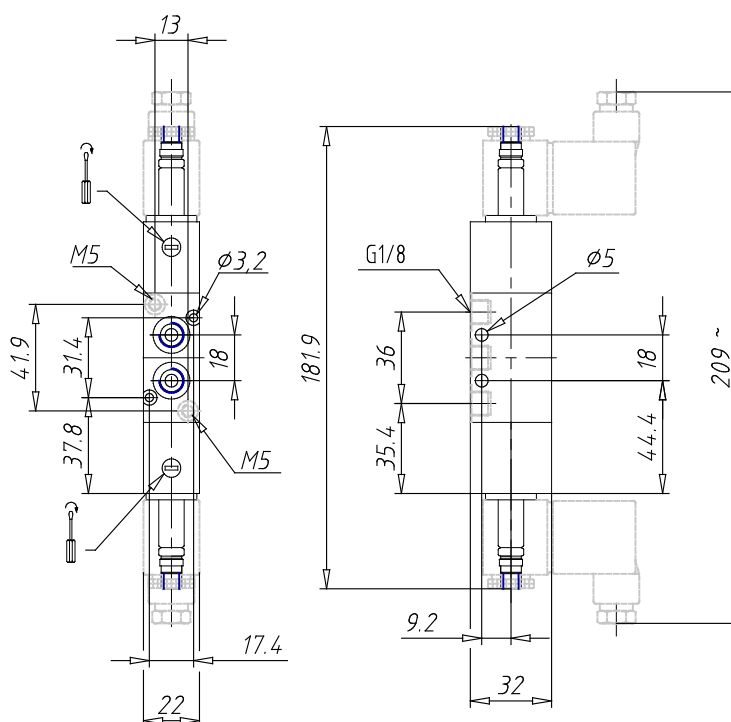


TECHNICAL DATA

Mod.	398D-E15-02
Function	1 x 3/2 NC + 1 x 3/2 NO
Flow rate (NI/min)	700
Operating pressure	-0,9 ÷ 10
Pilot pressure	2,5 ÷ 10
Manual override	= bistable standard
Dimensions of the solenoid	No solenoid
Solenoid voltage	

2 x 3/2-way solenoid valve, G1/8 - Series 3

Product code: 398D-E15-02



DIMENSIONS

Mod.	398D-E15-02
Function	1 x 3/2 NC + 1 x 3/2 NO
Flow rate (NI/min)	700
Operating pressure	-0,9 ÷ 10
Pilot pressure	2,5 ÷ 10
Manual override	= bistable standard
Dimensions of the solenoid	No solenoid
Solenoid voltage	