

## 5/2-way solenoid valve, G1/8, bistable - Mod. 358... - Serie 3

Product code: 358-E11-02

Datasheet creation date: 19/05/2026 17:01

Check the most updated document online [click here](#)

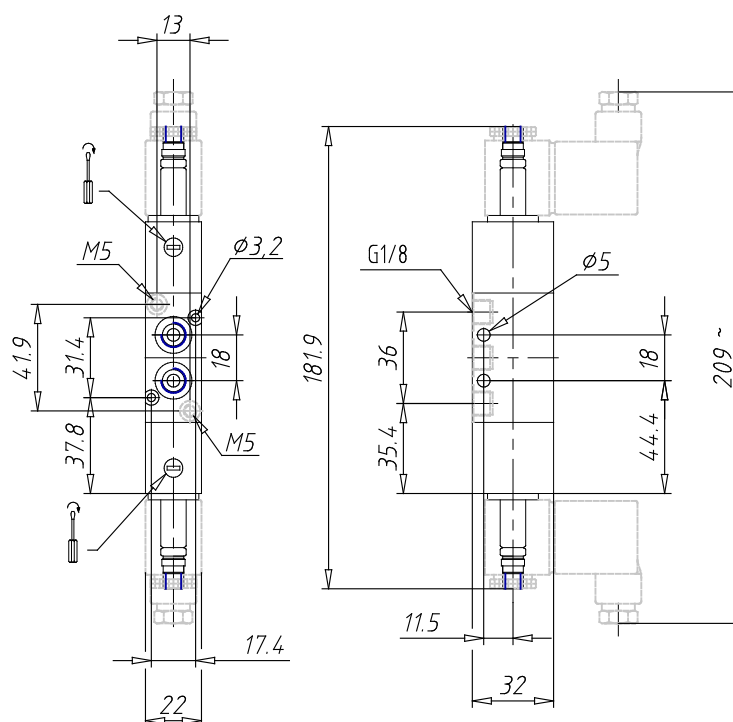


### TECHNICAL DATA

<b>Mod.</b>	358-E11-02
<b>Function</b>	5/2
<b>Flow rate (Nl/min)</b>	F
<b>Operating pressure</b>	-0,9 ÷ 10
<b>Pilot pressure</b>	1,5 ÷ 10
<b>Manual override</b>	= bistabile standard
<b>Dimensions of the solenoid</b>	No solenoid
<b>Solenoid voltage</b>	

## 5/2-way solenoid valve, G1/8, bistable - Mod. 358... - Serie 3

Product code: 358-E11-02



### DIMENSIONS

<b>Mod.</b>	358-E11-02
<b>Function</b>	5/2
<b>Flow rate (NI/min)</b>	F
<b>Operating pressure</b>	-0,9 ÷ 10
<b>Pilot pressure</b>	1,5 ÷ 10
<b>Manual override</b>	= bistabile standard
<b>Dimensions of the solenoid</b>	No solenoid
<b>Solenoid voltage</b>	