

5/2-way valve, G1/8 and G1/4 port, monostable - Series 3

Product code: 358-035

Datasheet creation date: 19/05/2026 08:48

Check the most updated document online [click here](#)

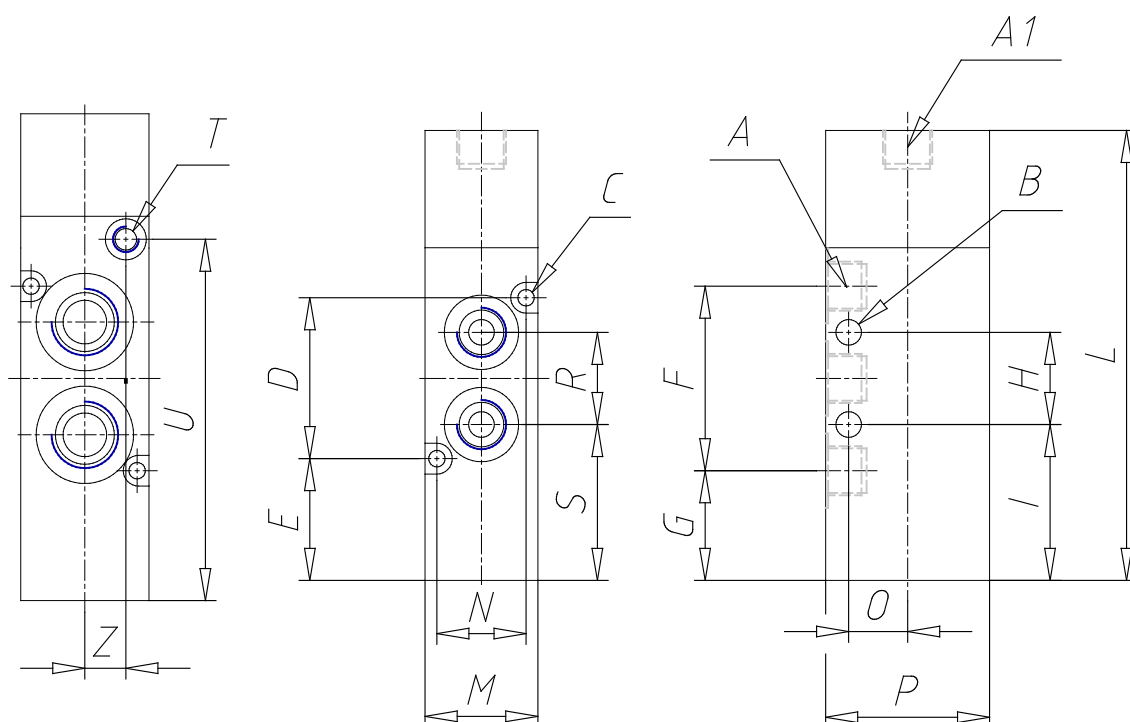


TECHNICAL DATA

Mod.	358-035
Mounting	Without base/conv.
Function	3/2 NC
Flow rate	700
P. min pilot. (bar)	3

5/2-way valve, G1/8 and G1/4 port, monostable - Series 3

Product code: 358-035



DIMENSIONS

A	G1/8
A1	G1/8
B (mm)	5
C (mm)	3.2
D (mm)	31.4
E (mm)	23.8
F (mm)	36
G (mm)	21.40
H (mm)	18
I (mm)	30.40
L (mm)	87.8
M (mm)	22
N (mm)	17.4
O (mm)	11.5
P (mm)	32
heavy (mm)	30.40
T (mm)	-
U (mm)	-
Z (mm)	-