

5/2-way valve, G1/8 and G1/4 port, bistable - Series 3

Product code: 348D-035

Datasheet creation date: 19/05/2026 17:01

Check the most updated document online [click here](#)

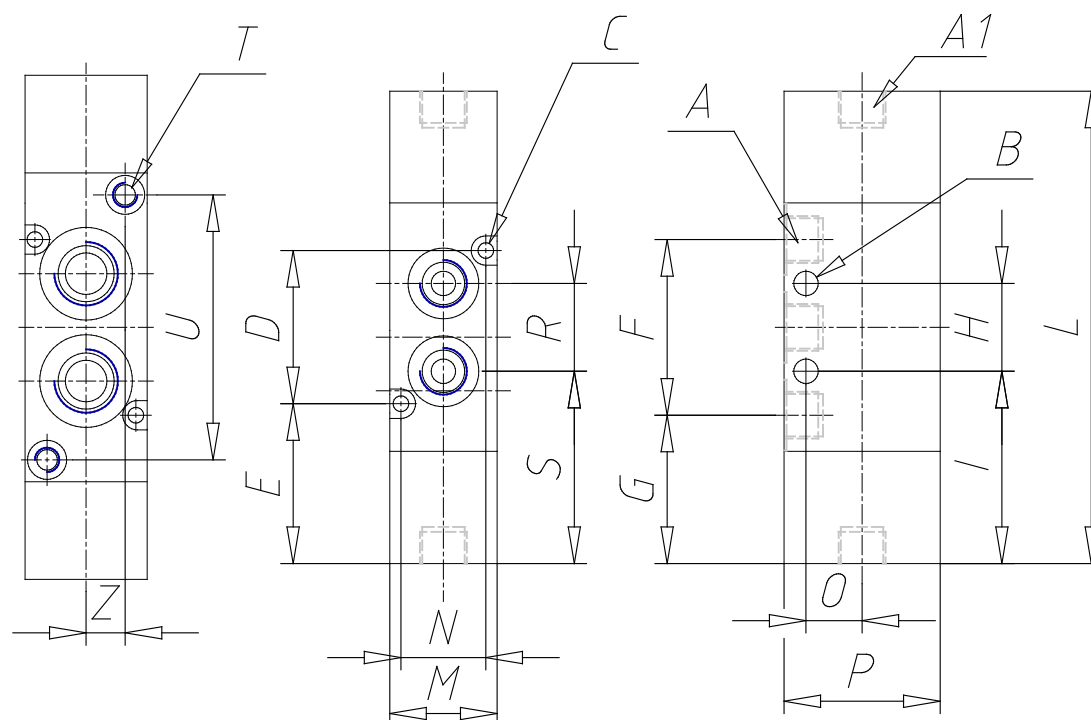


TECHNICAL DATA

Mod.	348D-035
Mounting	Without base/conv.
Function	2x3/2 NA
Flow rate	700
P. min pilot. (bar)	2.5

5/2-way valve, G1/8 and G1/4 port, bistable - Series 3

Product code: 348D-035



DIMENSIONS

A	G1/8
A1	G1/8
B (mm)	5
C (mm)	3.2
D (mm)	31.4
E (mm)	32.8
F (mm)	36
G (mm)	30.40
H (mm)	18
I (mm)	39.40
L (mm)	96.8
M (mm)	22
N (mm)	17.4
O (mm)	11.5
P (mm)	32
S (mm)	39.40
T (mm)	-
U (mm)	-
Z (mm)	-