

2 x 3/2-way solenoid valve, G1/8 - Series 3

Product code: 338D-E15-02

Datasheet creation date: 19/05/2026 17:02

Check the most updated document online [click here](#)

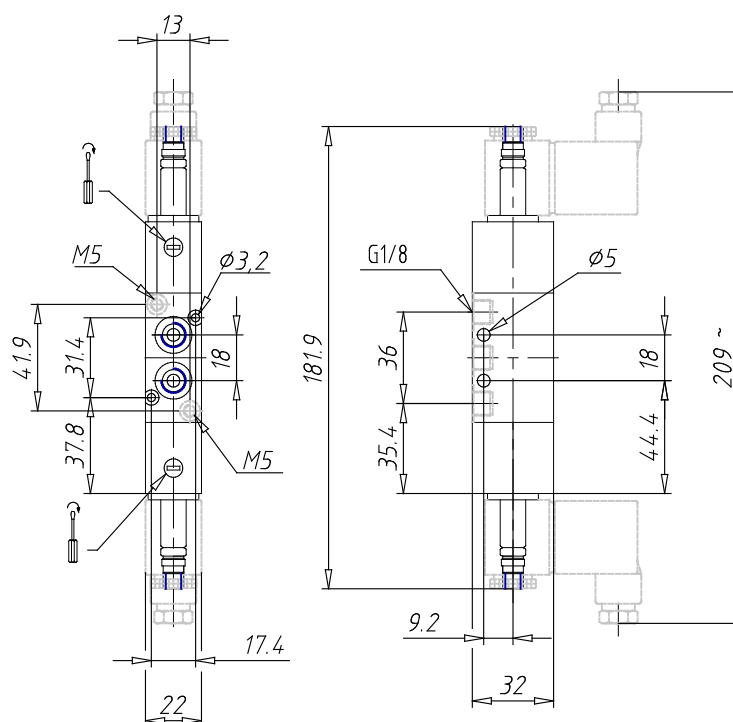


TECHNICAL DATA

| | |
|-----------------------------------|---------------------|
| Mod. | 338D-E15-02 |
| Function | 2 x 3/2 NC |
| Flow rate (NI/min) | 700 |
| Operating pressure | -0,9 ÷ 10 |
| Pilot pressure | 2,5 ÷ 10 |
| Manual override | = bistable standard |
| Dimensions of the solenoid | No solenoid |
| Solenoid voltage | |

2 x 3/2-way solenoid valve, G1/8 - Series 3

Product code: 338D-E15-02



DIMENSIONS

| | |
|-----------------------------------|---------------------|
| Mod. | 338D-E15-02 |
| Function | 2 x 3/2 NC |
| Flow rate (NI/min) | 700 |
| Operating pressure | -0,9 ÷ 10 |
| Pilot pressure | 2,5 ÷ 10 |
| Manual override | = bistable standard |
| Dimensions of the solenoid | No solenoid |
| Solenoid voltage | |