

2 x 3/2-way solenoid valve, G1/8 - Series 3

Product code: 338D-015-02

Datasheet creation date: 19/05/2026 17:01

Check the most updated document online [click here](#)

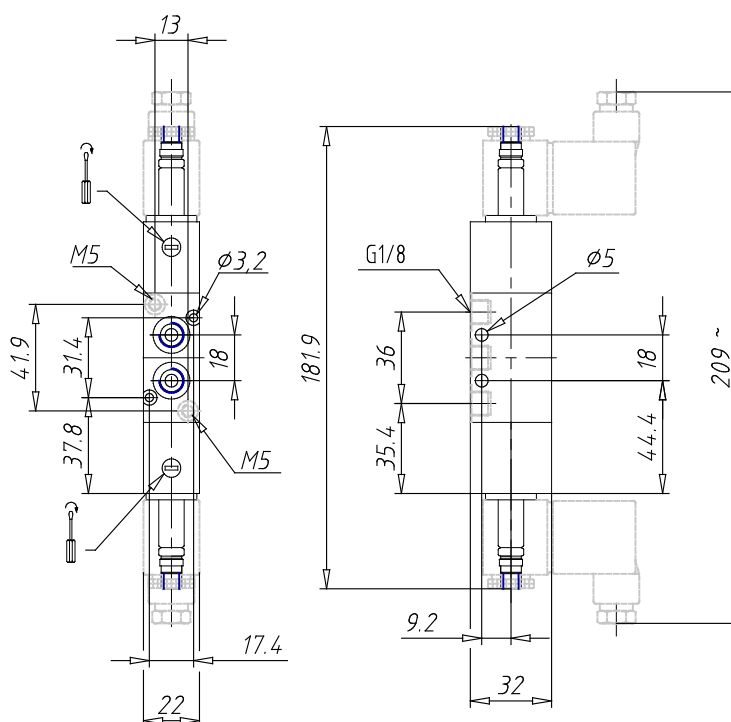


TECHNICAL DATA

Mod.	338D-015-02
Function	2 x 3/2 NC
Flow rate (NI/min)	700
Operating pressure	2,5 ÷ 10
Pilot pressure	-
Manual override	= bistable standard
Dimensions of the solenoid	No solenoid
Solenoid voltage	

2 x 3/2-way solenoid valve, G1/8 - Series 3

Product code: 338D-015-02



DIMENSIONS

Mod.	338D-015-02
Function	2 x 3/2 NC
Flow rate (NI/min)	700
Operating pressure	2,5 ÷ 10
Pilot pressure	-
Manual override	= bistable standard
Dimensions of the solenoid	No solenoid
Solenoid voltage	