

sensitive lever spring return - Valves series 338-D15-9A5

Product code: 338-D15-9A5

Datasheet creation date: 19/05/2026 17:10

Check the most updated document online [click here](#)

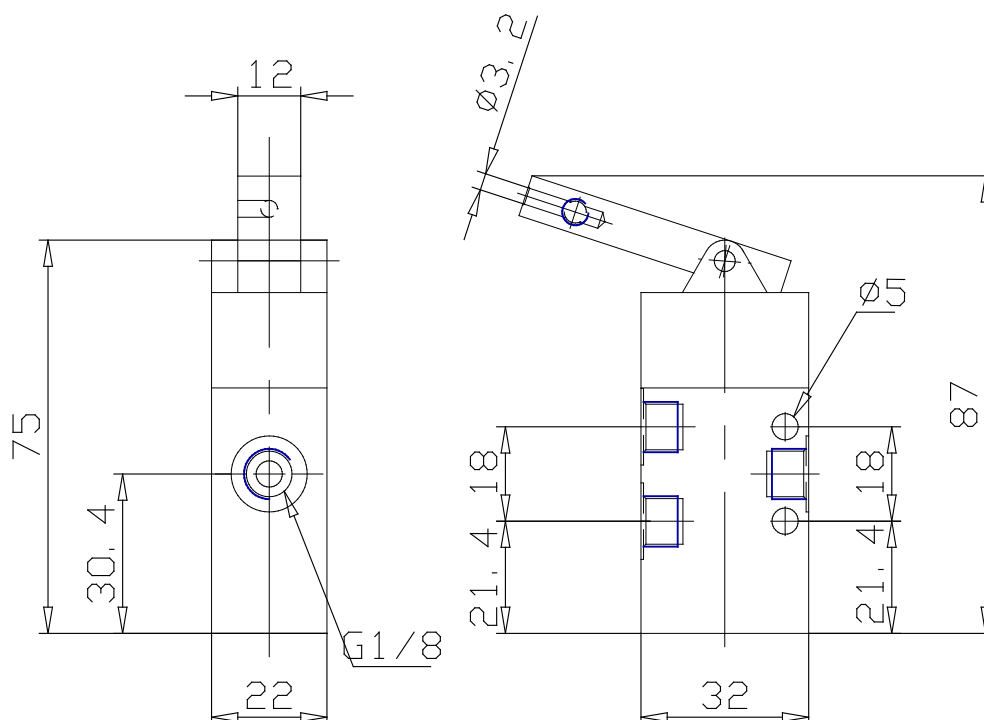


TECHNICAL DATA

Mod.	338-D15-9A5
Operating pressure (bar)	4+10 bar
Flow rate	700NL/min
Actuating force	2N
Activity	sensitive lever spring return

sensitive lever spring return - Valves series 338-D15-9A5

Product code: 338-D15-9A5



DIMENSIONS

Mod.	338-D15-9A5
Operating pressure (bar)	4÷10 bar
Flow rate	700NL/min
Actuating force	2N
Activity	sensitive lever spring return