

## 5/2-way valve, G1/8 and G1/4 port, bistable - Series 3

Product code: 334D-035

Datasheet creation date: 19/05/2026 17:04

Check the most updated document online [click here](#)

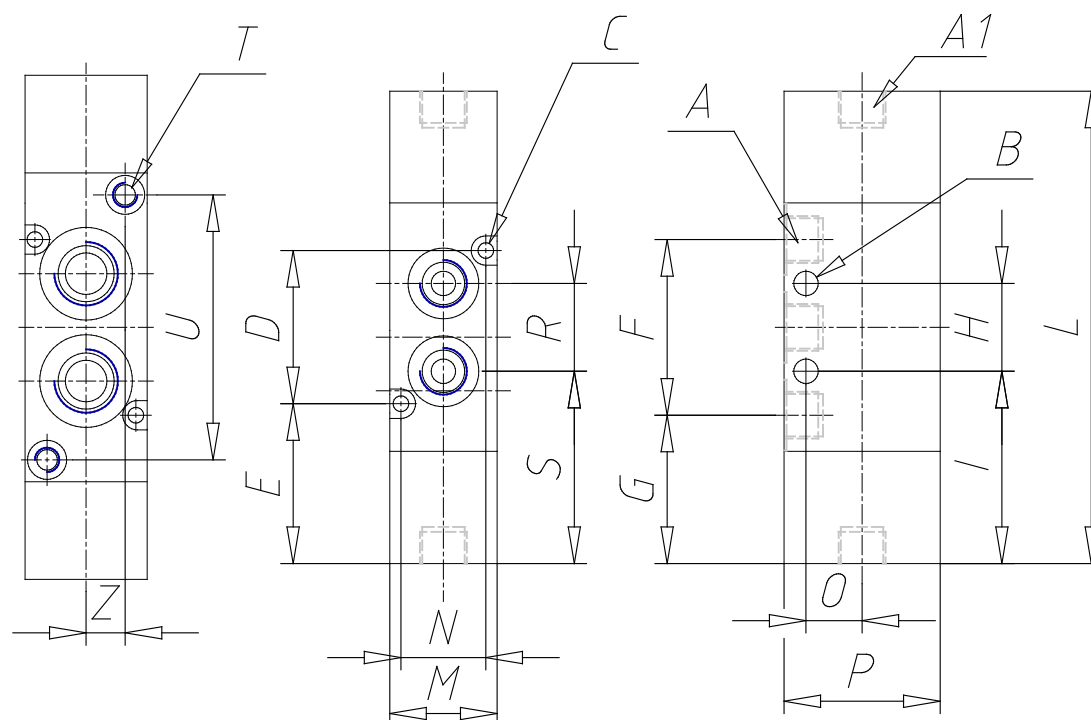


### TECHNICAL DATA

<b>Mod.</b>	334D-035
<b>Mounting</b>	Without base/conv.
<b>Function</b>	2x3/2 NC
<b>Flow rate</b>	1200
<b>P. min pilot. (bar)</b>	2.5

## 5/2-way valve, G1/8 and G1/4 port, bistable - Series 3

Product code: 334D-035



### DIMENSIONS

A	G1/4
A1	-
B (mm)	4.1
C (mm)	3.2
D (mm)	36
E (mm)	33.7
F (mm)	44
G (mm)	29.70
H (mm)	22
I (mm)	40.70
L (mm)	103.3
M (mm)	25
N (mm)	21
O (mm)	16
P (mm)	40
S (mm)	40.70
T (mm)	M5
U (mm)	54.3
Z (mm)	8