

Silencers - Series 2931

Product code: 2931 1

Datasheet creation date: 19/05/2026 17:11

Check the most updated document online [click here](#)

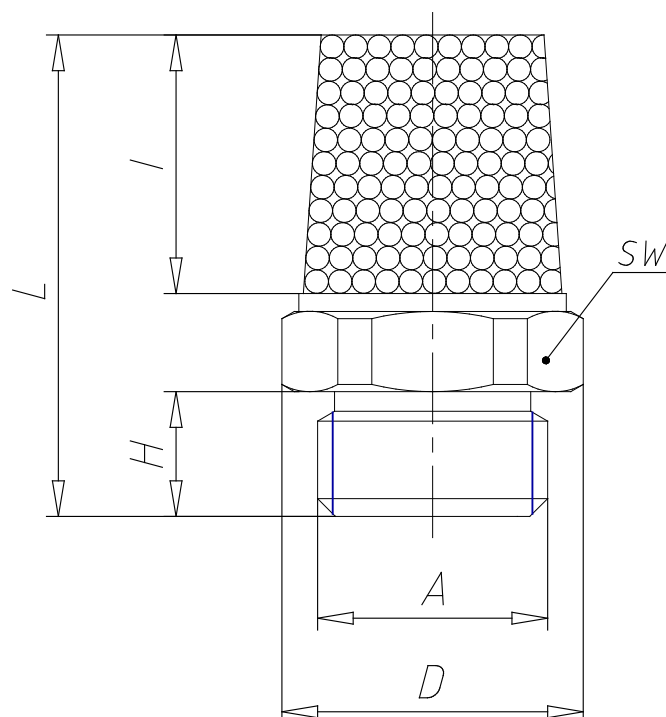


TECHNICAL DATA

Mod.	2931 1
Pressure range (Kg / cm² - bar)	max. 10
Flow rate (NI / min)	10800
Noise treshold (db (A))	86

Silencers - Series 2931

Product code: 2931 1



DIMENSIONS

A	G1
D (mm)	38.5
H (mm)	11.0
I (mm)	47.0
L (mm)	67.0
SW (mm)	36