

Silencers - Series 2929

Product code: 2929 6

Datasheet creation date: 19/05/2026 08:54

Check the most updated document online [click here](#)

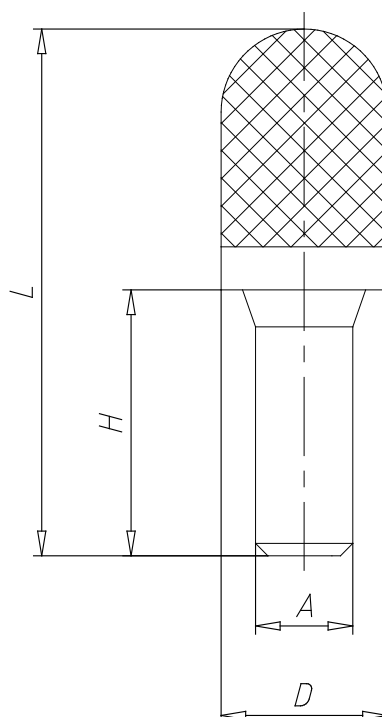


TECHNICAL DATA

Mod.	2929 6
Pressure range (Kg / cm ² - bar)	max. 10
Flow rate (NI / min)	660
Noise treshold (db (A))	80

Silencers - Series 2929

Product code: 2929 6



DIMENSIONS

A (mm)	6
D (mm)	12.5
H (mm)	20.5
L (mm)	45.0