

Silencers - Series 2929

Product code: 2929 4

Datasheet creation date: 19/05/2026 09:02

Check the most updated document online [click here](#)

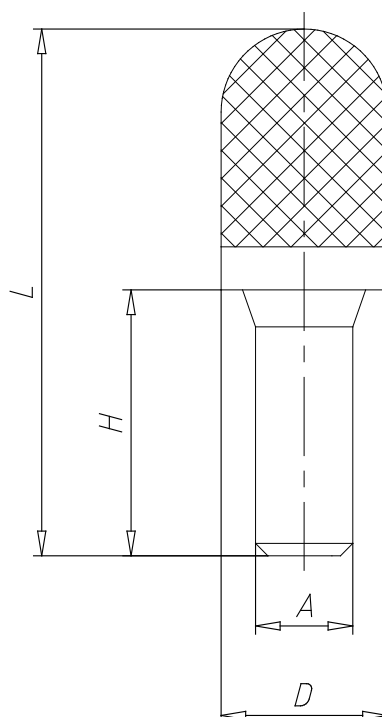


TECHNICAL DATA

Mod.	2929 4
Pressure range (Kg / cm² - bar)	max. 10
Flow rate (NI / min)	380
Noise treshold (db (A))	66

Silencers - Series 2929

Product code: 2929 4



DIMENSIONS

A (mm)	4
D (mm)	7.0
H (mm)	15.5
L (mm)	31.5