

Silencers - Series 2929

Product code: 2929 12

Datasheet creation date: 19/05/2026 09:00

Check the most updated document online [click here](#)

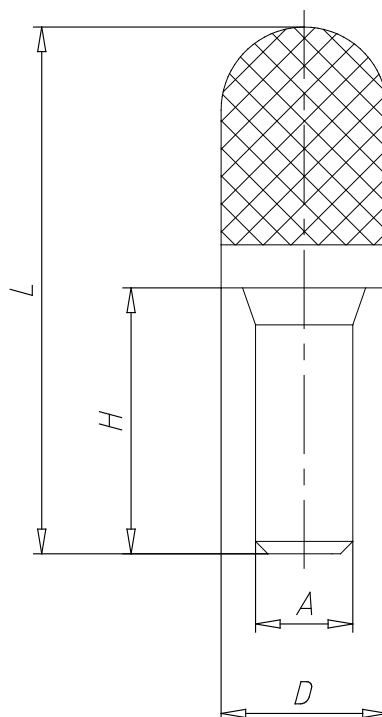


TECHNICAL DATA

Mod.	2929 12
Pressure range (Kg / cm ² - bar)	max. 10
Flow rate (NI / min)	4200
Noise treshold (db (A))	94

Silencers - Series 2929

Product code: 2929 12



DIMENSIONS

A (mm)	12
D (mm)	18.5
H (mm)	29.0
L (mm)	83.0