

Silencers - Series 2929

Product code: 2929 10

Datasheet creation date: 19/05/2026 08:54

Check the most updated document online [click here](#)

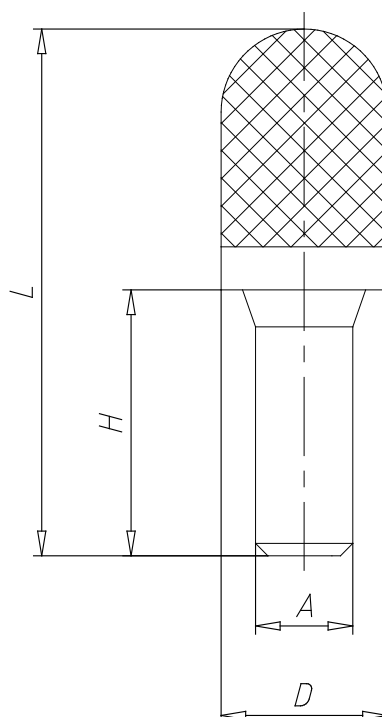


TECHNICAL DATA

Mod.	2929 10
Pressure range (Kg / cm ² - bar)	max. 10
Flow rate (NI / min)	2800
Noise treshold (db (A))	92

Silencers - Series 2929

Product code: 2929 10



DIMENSIONS

A (mm)	10
D (mm)	15.5
H (mm)	26.5
L (mm)	57.5