

## Silencers - Series 2928

Product code: 2928 1/8

Datasheet creation date: 19/05/2026 08:50

Check the most updated document online [click here](#)

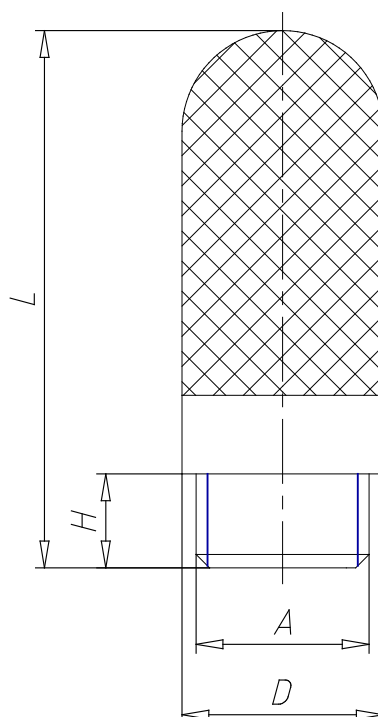


### TECHNICAL DATA

|   |          |
|---|----------|
| <b>Mod.</b>                                       | 2928 1/8 |
| <b>Pressure range (Kg / cm<sup>2</sup> - bar)</b> | max. 10  |
| <b>Flow rate (NI / min)</b>                       | 1450     |
| <b>Noise treshold (db (A))</b>                    | 67       |

## Silencers - Series 2928

Product code: 2928 1/8



### **DIMENSIONS**

|               |      |
|---------------|------|
| <b>A</b>      | G1/8 |
| <b>D (mm)</b> | 12.9 |
| <b>H (mm)</b> | 6.5  |
| <b>L (mm)</b> | 34.5 |