

Silencers - Series 2928

Product code: 2928 1/4

Datasheet creation date: 19/05/2026 08:50

Check the most updated document online [click here](#)

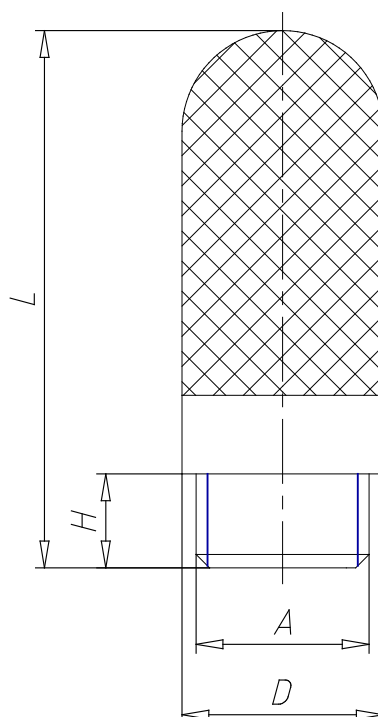


TECHNICAL DATA

| | |
|---|----------|
| Mod. | 2928 1/4 |
| Pressure range (Kg / cm ² - bar) | max. 10 |
| Flow rate (NI / min) | 2730 |
| Noise treshold (db (A)) | 72 |

Silencers - Series 2928

Product code: 2928 1/4



■ DIMENSIONS

| | |
|---------------|------|
| A | G1/4 |
| D (mm) | 16.6 |
| H (mm) | 7.0 |
| L (mm) | 42.5 |