

## Silencers - Series 2928

Product code: 2928 1/2

Datasheet creation date: 19/05/2026 09:00

Check the most updated document online [click here](#)

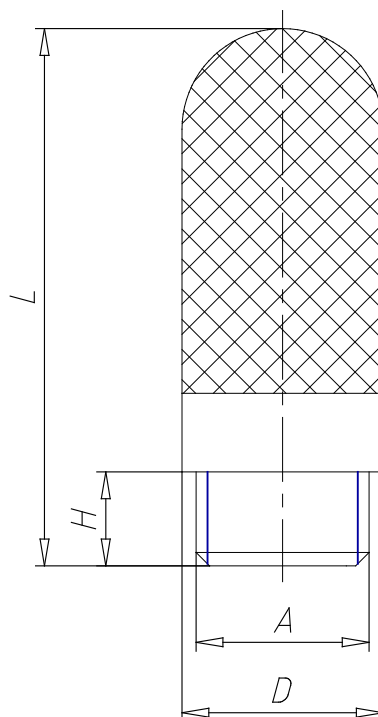


### TECHNICAL DATA

<b>Mod.</b>	2928 1/2
<b>Pressure range (Kg / cm<sup>2</sup> - bar)</b>	max. 10
<b>Flow rate (NI / min)</b>	8350
<b>Noise treshold (db (A))</b>	87

## Silencers - Series 2928

Product code: 2928 1/2



### **DIMENSIONS**

<b>A</b>	G1/2
<b>D (mm)</b>	24.8
<b>H (mm)</b>	10.5
<b>L (mm)</b>	79.5