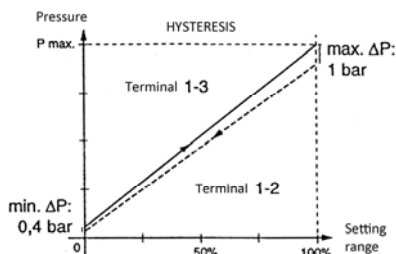
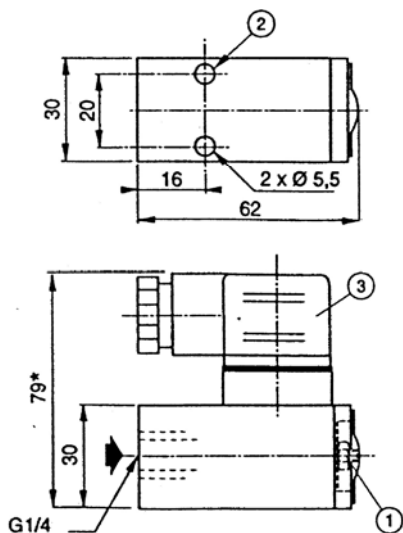


Threaded type

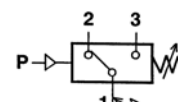


- ① Pressure set screw (spanner for hexagon nuts = 3 mm)
- ② 2 holes Ø 5.5 for mounting
- ③ ISO 4400 size 30 connector, 4 terminals, rotatable by 90°
- * +15 mm for connector clearance
- ** +2 mm for 0.5 to 16 bar version

DS 4801 to DS 4803

G 1/4

0.2 to 6.0 bar
0.5 to 10.0 bar
0.5 to 16.0 bar



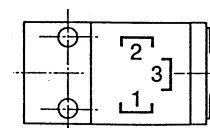
Characteristics

Order No.	DS 4801	DS 4802	DS 4803
Setting range [bar]	0.2 to 6.0	0.5 to 10.0	0.5 to 16.0
Function	Changeover contact		
Connection	G 1/4 (baseplate connection on request)		
General			
Type of construction	Diaphragms, spring-loaded		
Diaphragms	NBR		
Mounting type	Internal thread or two through holes in the housing		
Connecting thread	G 1/4" or flange mounting		
Mounting position	Any		
Ambient temperature	-10 °C to +60 °C		
Media	Air, neutral gases, filtered, oiled or unoled		
Weight [g]	110		
Mechanical endurance	10 ⁶		
Material	Grivory (PA61/XT)	Grivory (PA61/XT)	Al, anodised black
Setting	Bolt with lock nut		
Pneumatic			
Max. pressure [bar]	16.0		
Adjustment	Under pressure		
Hysteresis	0.4 % at the lower limit of the setting range		
Electrical			
Max. voltage	250 V – AC/DC		
Switching element	Microswitch -Silver-plated contacts		
Max. switching frequency	60 cycles/min.		
No. of poles	3		
Electrical connection	ISO 4400, CM10 (Pg 11P) cable socket (4 contacts), can be rotated 90°		
Degree of protection	IP 65		

Electrical characteristics - breaking capacity

Supply voltage [V]	DC		AC	
	Resistive load [A]	Inductive load [A]	Resistive load [A]	Inductive load [A]
30	5	3	-	-
115	0.4	0.05	5	3
250	0.25	0.02	5	3

Electrical connection



Important

- Currents which are too high may damage the contacts.
- Spark-quenching devices must be provided in inductively loaded DC circuits, e.g. magnets.
- Do not use the pressure switches as the sole means of disconnecting a device from the mains.