

Butterfly Valve K4 with hand wheel



General:

- Sealing material: EPDM
FPM
- Body material: PP-GF
- Disc material: PVC-U
PP
PVDF
- Dimensions: DN65 – DN200
d75 – d225
2 1/2" – 8"
- Flange connections: DIN 2501 PN10
ANSI B 16,5 Class 150
JIS 10 K [for DN65-DN150 only*]
BS Table D&E
- Additional dimension: DN65/d63 PVC-U
DIN 2501 PN10

* for mounting between JIS-Flanges DN200 please contact us

Operating pressure:

PVC-U, PP, PVDF PN10

Characteristics:

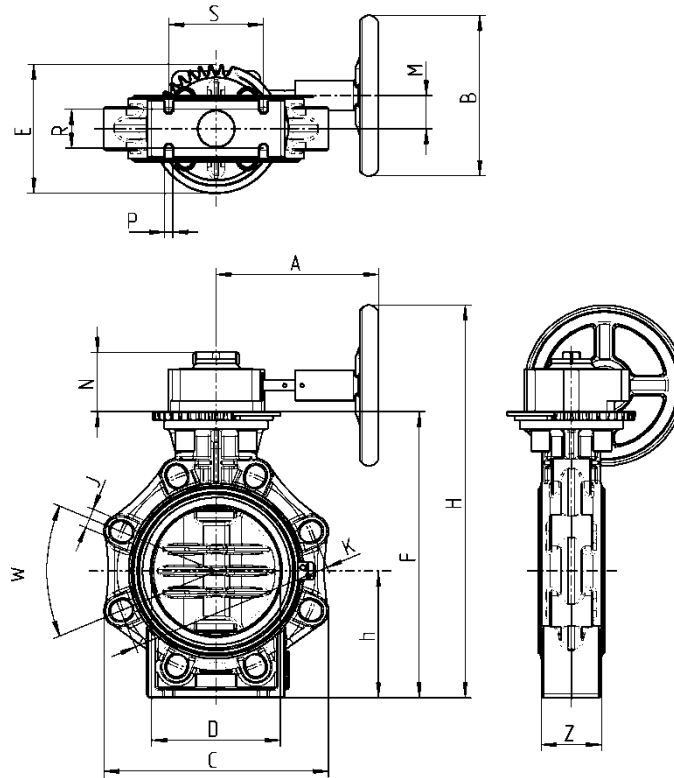
- only sleeve gasket and disc in touch with medium
- double sealed shaft
- integrated bracket for fix point mounting
- variable locking positions
90° ±5° adjustable
- fixed position of the disc due to self-locking gear mechanism
- smooth running of gear wheel due to high coefficient worm gear
- less space needed compared to hand lever
- gear protection IP67
- ambient temperature range for gear mechanism -20°C bis +80°C

This print contains no warranty promise, but it should give you some first information. The product range is extended continuously, therefore the versions and types correspond to the actual status of printing. Subject to technical modifications!

Butterfly Valve K4 with hand wheel



Dimensions:



| | | | | | | |
|----|---------|---------|-----------|-----------|-------------|-----------|
| DN | 65 | 80 | 100 | 125 | 150 | 200 |
| D | 75 | 90 | 110 | 140 | 160 | 225 |
| G | 2 1/2" | 3" | 4" | 5" | 6" | 8" |
| W | 90° | 45° | 45° | 45° | 45° | 45° |
| J | 19 | 19 | 19 | 23 | 23 | 23 |
| K | 127-145 | 146-160 | 175-190,5 | 209,5-216 | 234,5-241,5 | 290-298,5 |
| D | 65 | 80 | 100 | 125 | 150 | 200 |
| C | 133 | 176 | 206 | 234,5 | 261 | 314 |
| Z | 46 | 49 | 56 | 64 | 70 | 71 |
| S | 55 | 70 | 85 | 100 | 110 | 145 |
| R | 25 | 30 | 35 | 45 | 45 | 40 |
| P | 7 | 9 | 9 | 9 | 9 | 9 |
| h | 100 | 100 | 115 | 130 | 147,5 | 175 |
| F | 232 | 239 | 269 | 303,5 | 333 | 395 |
| N | 50,5 | 50,5 | 50,5 | 50,5 | 50,5 | 50,5 |
| H | 325 | 332 | 362 | 396,5 | 463,5 | 525,5 |
| A | 167 | 167 | 167 | 167 | 167 | 167 |
| B | 125 | 125 | 125 | 200 | 200 | 200 |
| M | 38,5 | 38,5 | 38,5 | 38,5 | 38,5 | 38,5 |
| E | 114 | 114 | 114 | 114 | 150 | 150 |
| PN | 10 | 10 | 10 | 10 | 10 | 10 |

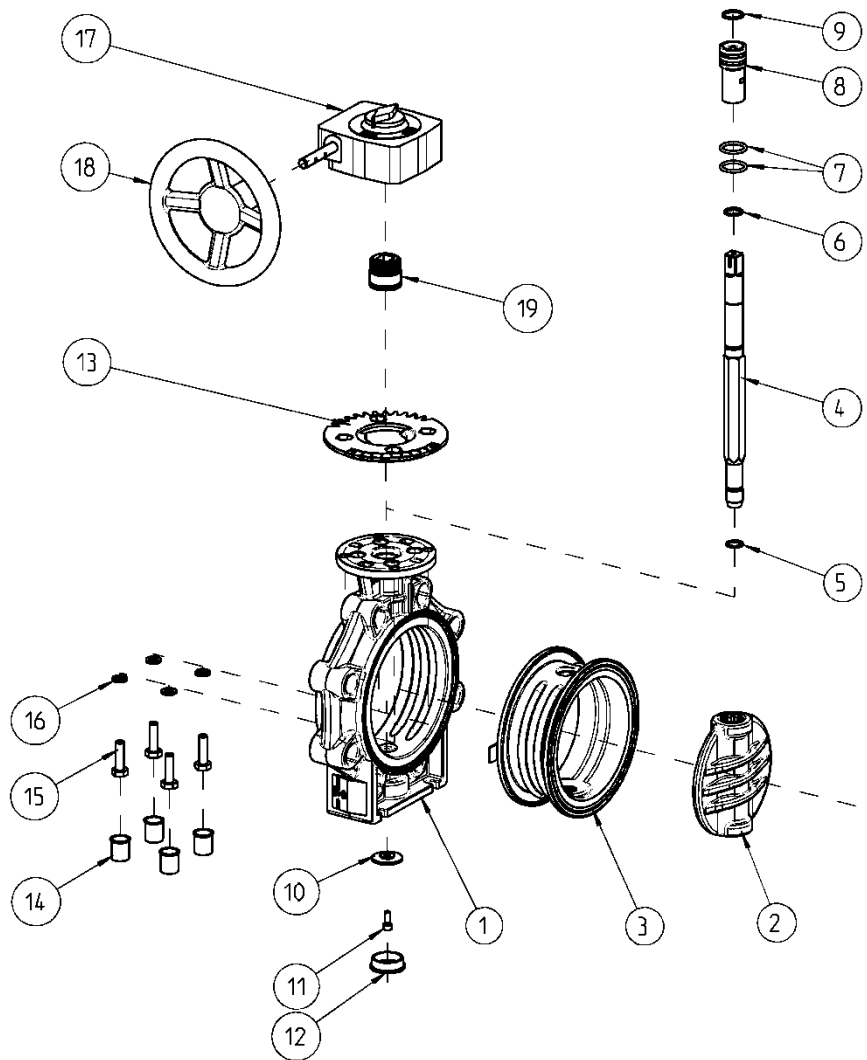
Dimensionen in mm



Butterfly Valve K4 with hand wheel

Exploded drawing:

- 01. Body
- 02. Disc
- 03. Sleeve
- 04. Shaft
- 05. Seal shaft below
- 06. Seal shaft above
- 07. Seal pilot bushing
- 08. Pilot bushing
- 09. Retaining ring
- 10. Holding disc
- 11. Tooth wheel
- 12. Cap
- 13. Cover plate
- 14. Cap
- 15. Screws
- 16. Tooth wheel
- 17. Hand gear
- 18. Hand wheel
- 19. Coupling

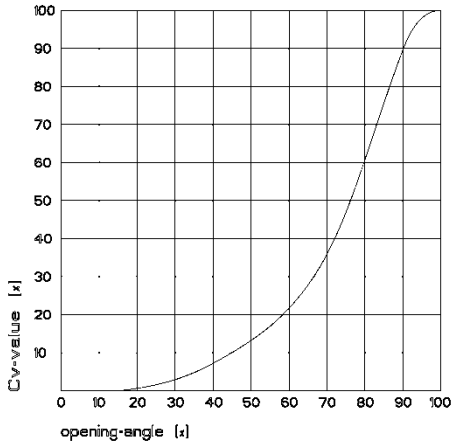


Butterfly Valve K4 with hand wheel

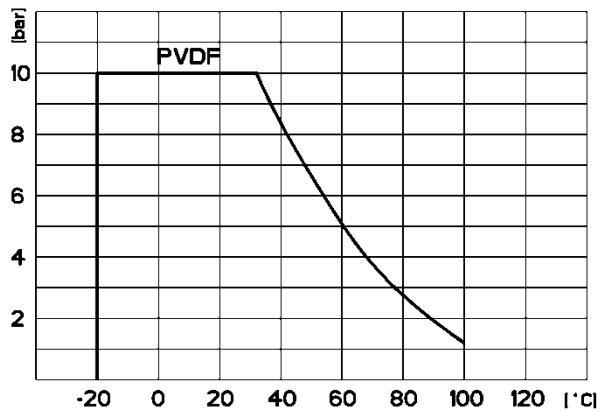
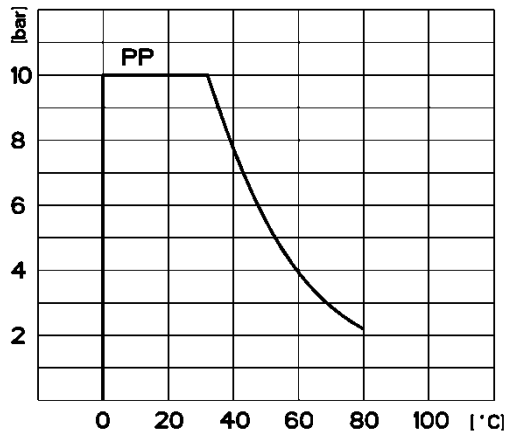
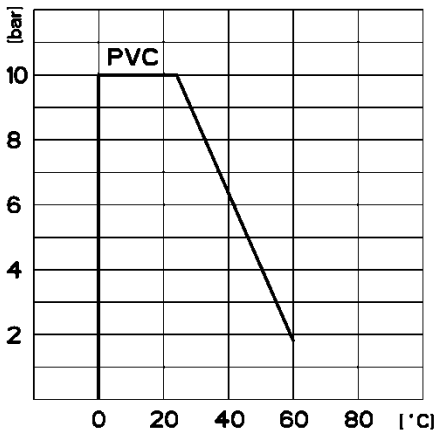


Diagrams:

Flow-characteristic



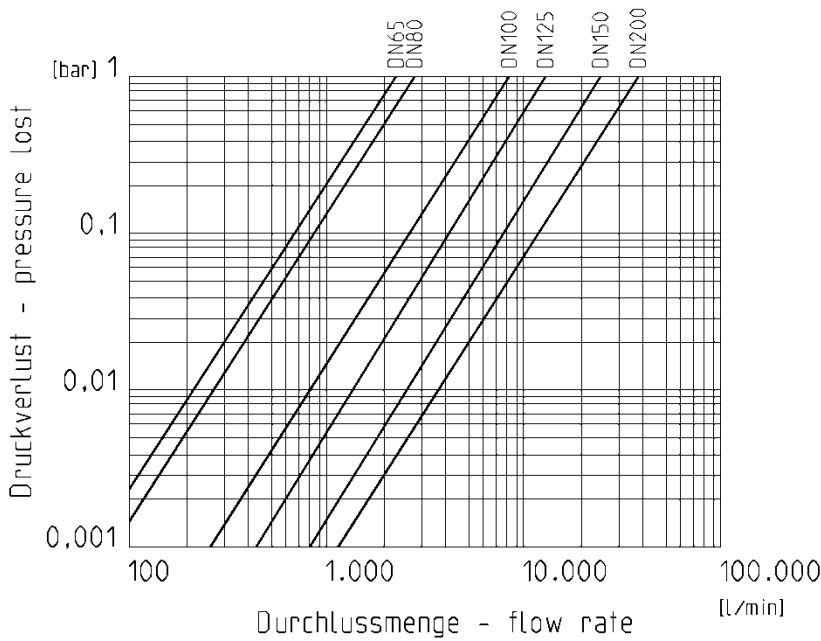
Pressure-Temperature-Diagram



Butterfly Valve K4 with hand wheel



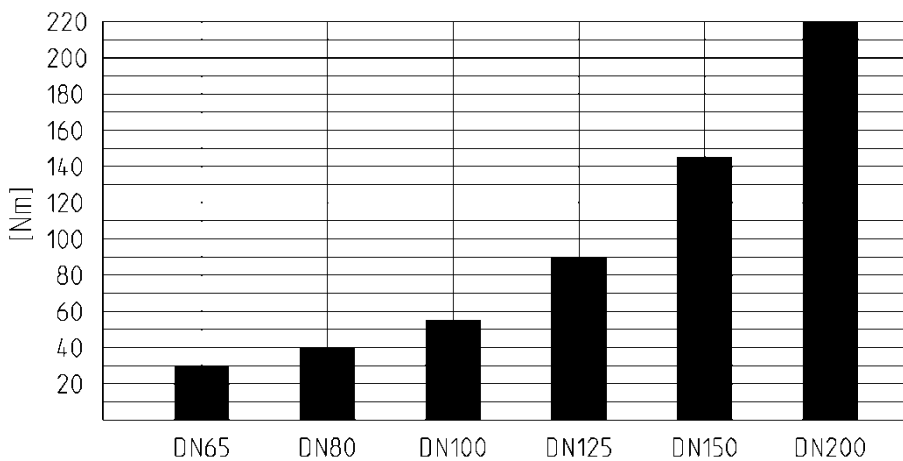
Pressure loss–Diagram



Kv value

| Pressure loss | DN65 | DN80 | DN100 | DN125 | DN150 | DN200 |
|---------------|------------|------------|------------|-------------|-------------|-------------|
| 0,001 bar | 73 l/min | 88 l/min | 260 l/min | 433 l/min | 805 l/min | 1200 l/min |
| 1 bar | 2300 l/min | 2800 l/min | 8200 l/min | 13700 l/min | 25500 l/min | 38000 l/min |

Torque



Tightening torque for screws for flange connections

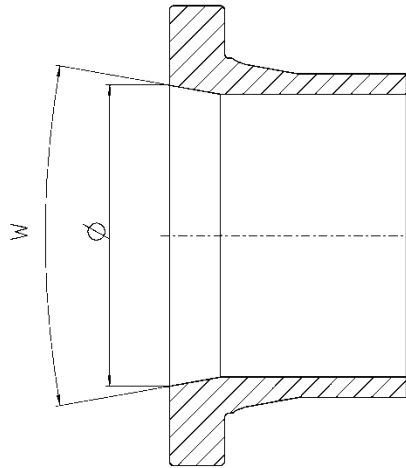
| DN | 65 | 80 | 100 | 125 | 150 | 200 |
|----|----|----|-----|-----|-----|-----|
| Nm | 15 | 18 | 20 | 30 | 40 | 55 |



Butterfly Valve K4 with hand wheel

Installation in PE100 SDR17 piping:

Stub flanges in PE100 SDR17 have to be chamfered. The following table indicates the measurements.



| DN | d | Ø (mm) | w (°) | Standard interior diameter PE 100 SDR 11 (mm) | Standard interior diameter PE 100 SDR 17 (mm) |
|-------|------|-----------|----------|--|--|
| DN50* | d63* | 60 | 40 | 51,4 | 55,4 |
| DN65 | d75 | 60 | 40 | 61,4 | 66 |
| DN80 | d90 | 77 | 40 | 73,6 | 79,2 |
| DN100 | d110 | 96,5 | 40 | 90 | 96,8 |
| DN125 | d140 | 121,5 | 40 | 114,6 | 123,4 |
| DN150 | d160 | 146,5 | 40 | 130,8 | 141 |
| DN200 | d225 | 203 | 40 | 184 | 198,2 |

* Suitable only for **DIN** DN50 d63 sockets and stub flanges.