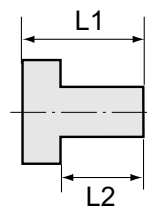




251.02-ES

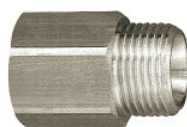


Reducing nipples, short type

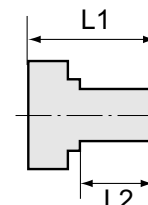
Type No.	Art. No.	Male thread	Female thread	L1 mm	L2 mm	a/f mm
251.00-ES	111620	G 1/8	M5	11.0	7.0	14
251.00/S-ES	111621	G 1/4	M5	14.0	10.0	17
251.01-ES	111622	G 1/4	G 1/8	13.0	8.0	17
251.06-ES	111623	G 3/8	G 1/8	13.0	9.5	19
251.02-ES	111624	G 3/8	G 1/4	13.0	9.5	19
251.08-ES	111625	G 1/2	G 1/8	18.0	12.0	24
251.07-ES	111626	G 1/2	G 1/4	15.5	11.5	22
251.03-ES	111627	G 1/2	G 3/8	15.5	11.5	22
251.09-ES	111628	G 3/4	G 3/8	18.0	12.0	32
251.04-ES	111629	G 3/4	G 1/2	21.0	14.0	32
251.10-ES	111630	G 1	G 1/2	24.0	16.0	36
251.05-ES	111631	G 1	G 3/4	18.0	12.0	36



252.10-ES



252.16-ES



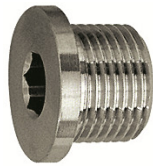
Reducing nipples, long type

Type No.	Art. No.	Male thread	Female thread	L1 mm	L2 mm	a/f mm
252.08/1-ES	111632	M5	M5	16.0	5.5	10
252.08/2-ES	111633	M5	G 1/8	17.0	5.0	14
252.11-ES	111634	G 1/8	G 1/8	23.0	8.0	14
252.08-ES	111635	G 1/8	G 1/4	26.0	10.0	17
252.12-ES	111636	G 1/4	G 1/8	28.0	10.0	17
252.13-ES	111637	G 1/4	G 1/4	28.0	10.0	17
252.09-ES	111638	G 1/4	G 3/8	26.0	10.0	19
252.14-ES	111639	G 3/8	G 1/4	29.0	10.0	19
252.15-ES	111640	G 3/8	G 3/8	29.0	10.0	19
252.10-ES	111641	G 3/8	G 1/2	27.0	12.0	24
252.16-ES	111642	G 1/2	G 3/8	34.0	12.0	24
252.17-ES	111643	G 1/2	G 1/2	34.0	12.0	24
252.18-ES	111644	G 1/2	G 3/4	38.0	13.0	32

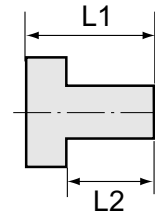
Standard screw fittings

Stainless steel 1.4571

Type No. 251.00-ES to 252.36-ES



252.92-ES



Hexagon socket screw plugs with collar

Type No.	Art. No.	Thread	L1 mm	L2 mm	a/f mm
252.91-ES	111645	G 1/8	11.0	8.0	5
252.92-ES	111646	G 1/4	13.0	10.0	6
252.93-ES	111647	G 3/8	15.0	12.0	8
252.94-ES	111648	G 1/2	18.0	14.0	10
252.94-2ES	111649	G 3/4	20.0	16.0	12
252.94-3ES	111650	G 1	21.0	16.0	17



252.102-ES

Hexagon socket screw plugs without collar

Type No.	Art. No.	Thread	L1 mm	L2 mm	a/f mm
252.101-ES	111651	G 1/8	8.0	-	5
252.102-ES	111652	G 1/4	10.0	-	6
252.103-ES	111653	G 3/8	12.5	-	8
252.104-ES	111654	G 1/2	14.0	-	10



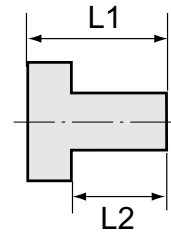
253.102-ES

Hexagon socket screw plugs without collar

Type No.	Art. No.	Thread	L1 mm	L2 mm	a/f mm
253.101-ES	111655	R 1/8	8.0	-	5
253.102-ES	111656	R 1/4	10.0	-	7
253.103-ES	111657	R 3/8	10.0	-	8
253.104-ES	111658	R 1/2	10.0	-	10
253.105-ES	111659	R 3/4	12.0	-	12
253.106-ES	111660	R 1	12.0	-	17

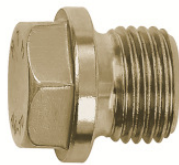


252.96-ES

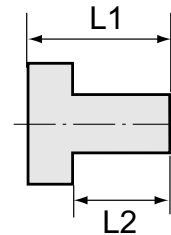


Hexagon head screw plugs

Type No.	Art. No.	Thread	L1 mm	L2 mm	a/f mm
252.95-ES	111661	G 1/8	11.0	6.0	13
252.96-ES	111662	G 1/4	13.0	8.0	17
252.97-ES	111663	G 3/8	14.0	8.0	19
252.98-ES	111664	G 1/2	16.0	10.0	24
252.99-ES	111665	G 3/4	16.0	11.0	30
252.100-ES	111666	G 1	19.0	13.0	38



252.112-ES



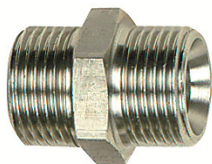
Hexagon head screw plugs with collar

Type No.	Art. No.	Thread	L1 mm	L2 mm	a/f mm
252.110-ES	111667	G 1/8	17.0	8.0	10
252.111-ES	111668	G 1/4	21.0	12.0	13
252.112-ES	111669	G 3/8	21.0	12.0	17
252.113-ES	111670	G 1/2	26.0	14.0	19
252.114-ES	111671	G 3/4	30.0	16.0	24
252.115-ES	111672	G 1	32.0	16.0	27

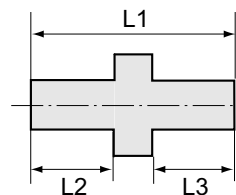
Standard screw fittings

Stainless steel 1.4571

Type No. 251.00-ES to 252.36-ES

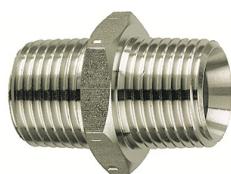


252.05-ES

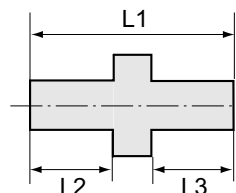


Double nipples, parallel male thread

Type No.	Art. No.	Thread 1	Thread 2	L1 mm	L2 mm	L3 mm	a/f mm
252 C-ES	111673	M 5	M 5	13.0	5.0	5.0	7
252 D-ES	111674	M 5	G 1/8	17.0	5.0	7.0	14
252 E-ES	111675	M 5	G 1/4	21.0	7.0	9.0	17
252 A-ES	111676	G 1/8	G 1/8	21.0	8.0	8.0	14
252 B-ES	111677	G 1/4	G 1/8	22.0	9.0	8.0	17
252 B/1-ES	111678	G 1/8	G 3/8	25.0	9.0	11.0	19
252.01-ES	111679	G 1/4	G 1/4	23.0	9.0	9.0	17
252.02-ES	111680	G 1/4	G 3/8	24.0	9.0	10.0	19
252.02/S-ES	111681	G 1/4	G 1/2	29.0	11.0	12.0	24
252.03-ES	111682	G 3/8	G 3/8	25.0	10.0	10.0	19
252.04-ES	111683	G 3/8	G 1/2	27.0	10.0	12.0	24
252.04/S-ES	111684	G 3/8	G 3/4	36.0	12.0	16.0	32
252.05-ES	111685	G 1/2	G 1/2	29.0	12.0	12.0	24
252.06-ES	111686	G 3/4	G 1/2	33.0	12.0	12.0	32
252.06/S-ES	111687	G 1/2	G 1	40.0	16.0	16.0	36
252.07-ES	111688	G 3/4	G 3/4	33.0	12.0	12.0	32
252.07/1-ES	111689	G 3/4	G 1	40.0	16.0	16.0	36
252.07/2-ES	111690	G 1	G 1	42.5	17.0	17.0	36



252.303-ES



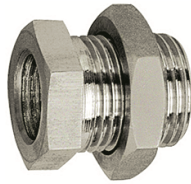
Double nipples, conical male thread, acc. to ISO 7-1

Type Nr.	Art. Nr.	Gewinde 1	Gewinde 2	L1 mm	L2 mm	L3 mm	SW mm
252.400-ES	125690	R 1/8	R 1/8	21.0	8.0	8.0	10
252.400/2-ES	125691	R 1/8	R 1/4	24.0	8.0	11.0	14
252.400/3-ES	125692	R 1/8	R 3/8	24.0	8.0	11.0	17
252.301-ES	111694	R 1/4	R 1/4	30.0	12.0	12.0	14
252.401/2-ES	125693	R 1/4	R 3/8	27.0	11.0	11.0	17
252.401/4-ES	125694	R 1/4	R 1/2	31.0	11.0	14.0	22
252.302-ES	111697	R 3/8	R 3/8	38.0	16.0	16.0	22
252.402/2-ES	125695	R 3/8	R 1/2	31.0	11.0	14.0	22
252.402/4-ES	125696	R 3/8	R 1	35.0	11.0	18.0	36
252.303-ES	111700	R 1/2	R 1/2	38.0	16.0	16.0	27
252.403/2-ES	125697	R 1/2	R 3/4	36.0	14.0	16.0	28
252.403/3-ES	125698	R 1/2	R 1	38.0	14.0	18.0	36
252.304-ES	111703	R 3/4	R 3/4	51.5	22.0	22.0	32
252.404/2-ES	125699	R 3/4	R 1	40.0	16.0	18.0	36
252.404/3-ES	125700	R 3/4	R 1 1/4	43.0	16.0	20.0	42
252.404/4-ES	125701	R 3/4	R 1 1/2	44.0	16.0	20.0	50
252.305-ES	111707	R 1	R 1	47.0	19.5	19.5	41
252.405/2-ES	125702	R 1	R 1 1/4	45.0	18.0	20.0	42
252.405/3-ES	125703	R 1	R 1 1/2	46.0	18.0	20.0	50
252.405/4-ES	125704	R 1	R 2	50.0	18.0	24.0	62
252.406-ES	125705	R 1 1/4	R 1 1/4	47.0	20.0	20.0	42
252.406/2-ES	125706	R 1 1/4	R 1 1/2	48.0	20.0	20.0	50
252.406/3-ES	125707	R 1 1/4	R 2	53.0	20.0	25.0	62
252.407-ES	125708	R 1 1/2	R 1 1/2	48.0	20.0	20.0	50
252.407/2-ES	125709	R 1 1/2	R 2	53.0	20.0	25.0	60
252.408-ES	125710	R 2	R 2	58.0	25.0	25.0	60
252.408/2-ES	125711	R 2	R 2 1/2	63.0	25.0	28.0	78
252.408/3-ES	125712	R 2	R 3	66.0	25.0	31.0	90
252.409-ES	125713	R 2 1/2	R 2 1/2	66.0	28.0	28.0	78
252.409/2-ES	125714	R 2 1/2	R 3	69.0	28.0	31.0	90
252.410-ES	125715	R 3	R 3	72.0	31.0	31.0	90

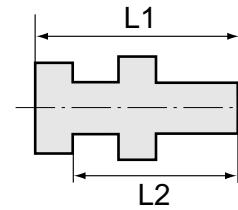
Standard screw fittings

Stainless steel 1.4571

Type No. 251.00-ES to 252.36-ES



252.42-ES



Bulkhead connectors

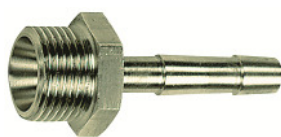
Type No.	Art. No.	Male thread	Female thread	L1 mm	L2 mm	a/f 1 mm	a/f 2 mm
252.41-ES	111722	G 1/4	G 1/8	18.0	14.0	17	17
252.42-ES	111723	G 3/8	G 1/4	22.0	17.0	19	24
252.43-ES	111724	G 1/2	G 3/8	27.0	21.0	24	24



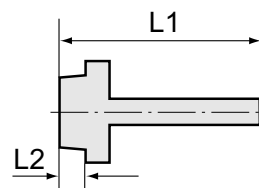
234 B-ES

Hexagonal swivel nuts

Type No.	Art. No.	Thread	For fitting size	L1 mm	a/f mm
234 A-ES	111725	G 1/4	I.D. 4, I.D. 6	15.0	17
234 A/S-ES	111726	G 1/4	I.D. 9	15.0	17
234 B-ES	111727	G 3/8	I.D. 4, I.D. 6, I.D. 9	15.0	19
234 C-ES	111728	G 1/2	I.D. 9	16.0	24
234 C/S-ES	111729	G 1/2	I.D. 13	16.0	24
234 C/L-ES	111730	G 1/2	I.D. 6, I.D. 9, I.D. 13	20.0	24
234 C/M-ES	111731	G 3/4	I.D. 13, I.D. 19	16.0	32
234 C/N-ES	111732	G 1	I.D. 19, I.D. 25	18.0	41



239 E-ES



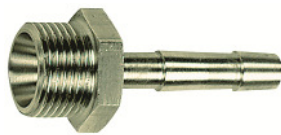
Male hose fittings with parallel male thread

Type No.	Art. No.	Thread	For hose mm	L1 mm	L2 mm	a/f mm
239.00-ES	111733	M5	I.D. 4	15.5	5.0	8
N239.00-ES1	111734	M5	I.D. 6	23.5	5.0	9
239.01-ES	111735	G 1/8	I.D. 4	41.5	9.0	14
239.02-ES	111736	G 1/8	I.D. 6	41.5	9.0	14
N239.02-ES1	111737	G 1/8	I.D. 8	36.0	7.0	14
239.03-ES	111738	G 1/8	I.D. 9	48.5	10.0	17
239 A-ES	111739	G 1/4	I.D. 4	48.5	10.0	17
239 B-ES	111740	G 1/4	I.D. 6	48.5	10.0	17
N239 B-ES1	111741	G 1/4	I.D. 8	39.0	9.0	17
239 C-ES	111742	G 1/4	I.D. 9	48.5	10.0	17
N239 C-ES1	111743	G 1/4	I.D. 10	39.0	9.0	17
239 C/S-ES	111744	G 1/4	I.D. 13	48.5	10.0	19
239 D-ES	111745	G 3/8	I.D. 4	48.5	10.0	19
239 E-ES	111746	G 3/8	I.D. 6	48.5	10.0	19
N239 E-ES1	111747	G 3/8	I.D. 8	39.0	9.0	19
239 F-ES	111748	G 3/8	I.D. 9	48.5	10.0	19
N239 F-ES1	111749	G 3/8	I.D. 10	39.0	9.0	19
239 F/S-ES	111750	G 3/8	I.D. 13	48.5	10.0	19
239 G-ES	111751	G 1/2	I.D. 6	48.5	10.0	24
N239 G-ES1	111752	G 1/2	I.D. 8	42.0	11.0	24
239 H-ES	111753	G 1/2	I.D. 9	48.5	10.0	24
N239 H-ES1	111754	G 1/2	I.D. 10	42.0	11.0	24
239 J-ES	111755	G 1/2	I.D. 13	50.0	10.0	24
N239 J-ES1	111756	G 1/2	I.D. 16	53.0	11.0	24
N239 J-ES2	111757	G 1/2	I.D. 19	53.0	11.0	24
239 K-ES	111758	G 3/4	I.D. 9	50.5	11.0	27
239 M-ES	111759	G 3/4	I.D. 13	52.0	11.0	27
239 P-ES	111760	G 3/4	I.D. 19	50.5	11.0	27
N239 S-ES	111761	G 1	I.D. 19	55.0	13.0	38
N239 W-ES	111762	G 1	I.D. 25	55.0	13.0	38
N239 Z-ES	111763	G 1	I.D. 32	55.0	13.0	38

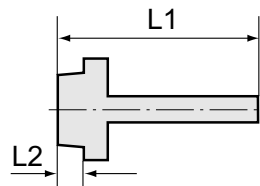
Standard screw fittings

Stainless steel 1.4571

Type No. 251.00-ES to 252.36-ES

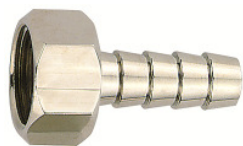


N239 F-ESR

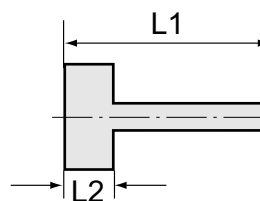


Male hose fittings with conical male thread

Type No.	Art. No.	Thread	For hose mm	L1 mm	L2 mm	a/f mm
N239 C-ESR	111764	R 1/4	I.D. 9	39.7	9.7	17
N239 F-ESR	111765	R 3/8	I.D. 9	40.1	10.1	19
N239 FS-ESR	111766	R 3/8	I.D. 13	43.1	10.1	19
N239 J-ESR	111767	R 1/2	I.D. 13	47.2	13.2	24
N239 J-ESR2	111768	R 1/2	I.D. 19	55.2	13.2	24
N239 P-ESR	111769	R 3/4	I.D. 19	56.2	14.5	32
N239 W-ESR	111770	R 1	I.D. 25	58.8	16.8	38

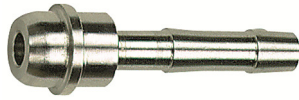


239.19-ES

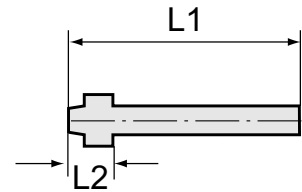


Female hose fittings with female thread

Type No.	Art. No.	Thread	For hose mm	L1 mm	L2 mm	a/f mm
239.10-ES	111771	G 1/8	I.D. 6	35.0	10.0	12
239.11-ES	111772	G 1/8	I.D. 8	35.0	10.0	12
239.12-ES	111773	G 1/4	I.D. 6	36.0	11.0	17
239.13-ES	111774	G 1/4	I.D. 8	36.0	11.0	17
239.14-ES	111775	G 1/4	I.D. 10	36.0	11.0	17
239.15-ES	111776	G 1/4	I.D. 13	40.5	11.0	17
239.18-ES	111777	G 3/8	I.D. 6	36.0	11.0	19
239.19-ES	111778	G 3/8	I.D. 8	36.0	11.0	19
239.20-ES	111779	G 3/8	I.D. 10	36.0	11.0	19
239.21-ES	111780	G 3/8	I.D. 13	40.5	11.0	19
239.25-ES	111781	G 1/2	I.D. 6	39.0	14.5	24
239.26-ES	111782	G 1/2	I.D. 8	39.0	14.5	24
239.27-ES	111783	G 1/2	I.D. 10	39.0	14.5	24
239.28-ES	111784	G 1/2	I.D. 13	44.0	14.5	24



236 E-ES



Hose fittings with ball nipple

Type No.	Art. No.	For hose mm	For swivel nut	L1 mm	L2 mm
236.02-ES	111785	I.D. 6	G 1/8	33.5	6.0
236 A-ES	111786	I.D. 4	G 1/4	47.0	13.5
236 B-ES	111787	I.D. 6	G 1/4	47.0	13.5
236 C-ES	111788	I.D. 9	G 1/4	47.0	14.0
236 E-ES	111789	I.D. 6	G 3/8	48.5	15.0
236 F-ES	111790	I.D. 9	G 3/8	48.5	15.0
236 H-ES	111791	I.D. 9	G 1/2	48.5	15.0
236 J-ES	111792	I.D. 13	G 1/2	48.5	15.0

Standard screw fittings

Stainless steel 1.4571

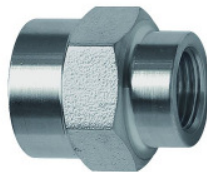
Type No. 251.00-ES to 252.36-ES



252.22-ES

Sockets with outer hex

Type No.	Art. No.	Thread	L1 mm	a/f mm
252.20-ES	111793	M5	11.0	8
252.21-ES	111794	G 1/8	22.0	14
252.22-ES	111795	G 1/4	26.0	17
252.23-ES	111796	G 3/8	26.0	22
252.24-ES	111797	G 1/2	30.0	27
252.24/1-ES	111798	G 3/4	36.0	32
252.24/2-ES	111799	G 1	40.0	41



252.32-ES

Reducing sockets with hexagon head

Type No.	Art. No.	Thread 1	Thread 2	L1 mm	a/f mm
252.31-ES	111800	G 1/8	M5	12.6	14
252.32-ES	111801	G 1/4	G 1/8	19.5	17
252.33-ES	111802	G 3/8	G 1/4	22.8	22
252.34-ES	111803	G 1/2	G 3/8	24.0	27
252.35-ES	111804	G 3/4	G 1/2	25.0	32
252.36-ES	111805	G 1	G 3/4	25.0	41