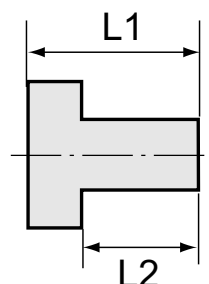


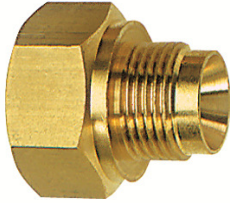


251.02

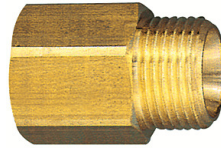


Reducing nipple, short type

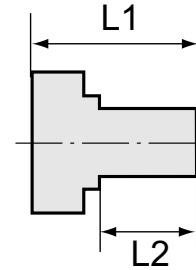
Art. No.	Ident No.	Male thread	Female thread	L1 mm	L2 mm	a/f mm
290.940	108010	M14x1.5	M10x1.0	11.0	7.0	17
290.941	108011	M24x1.5	M16x1.5	24.0	16.0	27
251.00	111101	G 1/8	M5	11.0	7.0	14
251.00/S	111102	G 1/4	M5	14.0	10.0	17
251.01	101320	G 1/4	G 1/8	13.0	8.0	17
251.06	111103	G 3/8	G 1/8	13.0	9.5	19
251.02	100908	G 3/8	G 1/4	13.0	9.5	19
251.08	111104	G 1/2	G 1/8	18.0	12.0	24
251.07	101115	G 1/2	G 1/4	15.5	11.5	22
251.03	100913	G 1/2	G 3/8	15.5	11.5	22
251.19	111105	G 3/4	G 1/4	18.0	12.0	27
251.09	111106	G 3/4	G 3/8	18.0	12.0	32
251.04	111107	G 3/4	G 1/2	21.0	14.0	32
251.10	111108	G 1	G 1/2	24.0	16.0	36
251.05	100918	G 1	G 3/4	18.0	12.0	36
251.20	111109	G 1 1/4	G 3/4	23.0	16.0	42
251.11	111110	G 1 1/4	G 1	24.0	16.0	42
251.21	111111	G 1 1/2	G 3/4	24.0	16.0	50
251.11/1	111112	G 1 1/2	G 1	24.0	16.0	48
251.12	100921	G 1 1/2	G 1 1/4	21.0	15.0	50
251.12/1	111113	G 2	G 1	28.0	18.0	62
251.12/2	111114	G 2	G 1 1/4	26.5	18.0	62
251.13	101173	G 2	G 1 1/2	30.0	20.0	65



252.10



252.16

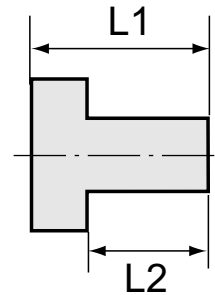


Reducing nipple. long type

Art. No.	Ident No.	Male thread	Female thread	L1 mm	L2 mm	a/f mm
252.08/1	111115	M5	M5	15.0	5.0	8
252.08/2	111116	M5	G 1/8	17.0	5.0	14
252.08/3	111117	G 1/8	M5	17.0	7.0	14
252.11	111118	G 1/8	G 1/8	23.0	8.0	14
252.08	111119	G 1/8	G 1/4	26.0	10.0	17
252.12	111120	G 1/4	G 1/8	28.0	10.0	17
252.13	111121	G 1/4	G 1/4	28.0	10.0	17
252.09	111122	G 1/4	G 3/8	26.0	10.0	19
252.14	111123	G 3/8	G 1/4	29.0	10.0	19
252.15	111124	G 3/8	G 3/8	29.0	10.0	19
252.10	111125	G 3/8	G 1/2	27.0	12.0	24
252.16	111126	G 1/2	G 3/8	34.0	12.0	24
252.17	111127	G 1/2	G 1/2	34.0	12.0	24
252.18	111128	G 1/2	G 3/4	38.0	13.0	32
252.19	111129	G 3/4	G 1	26.0	11.0	36



252.92



Hexagon socket screw plug with collar

Art. No.	Ident No.	Thread	L1 mm	L2 mm	a/f mm
252.91	111130	G 1/8 hexagon socket head	11.0	8.0	5
252.92	111131	G 1/4 hexagon socket head	13.0	10.0	6
252.93	111132	G 3/8 hexagon socket head	15.0	12.0	8
252.94	111133	G 1/2 hexagon socket head	18.0	14.0	10
252.94-2	111134	G 3/4 hexagon socket head	24.0	20.0	12
252.94-3	111135	G 1 hexagon socket head	27.0	22.0	17

Standard screw fittings

Brass

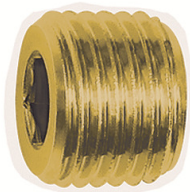
Art. No. 290.940 to 74-069



252.102

Hexagon socket screw plug without collar

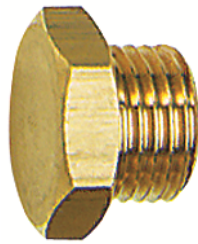
Art. No.	Ident No.	Thread	L1 mm	a/f mm
290.970	108022	M8x0.75 hexagon socket head	8.0	4
290.971	108023	M10x1.0 hexagon socket head	8.0	5
290.972	108024	M12x1.5 hexagon socket head	8.0	6
290.973	108025	M14x1.5 hexagon socket head	10.0	7
252.101	111136	G 1/8 hexagon socket head	8.0	5
252.102	111137	G 1/4 hexagon socket head	10.0	6
252.103	111138	G 3/8 hexagon socket head	12.5	8
252.104	111139	G 1/2 hexagon socket head	14.0	10



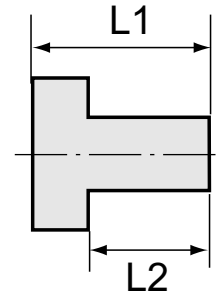
253.102

Hexagon socket screw plug without collar

Art. No.	Ident No.	Thread	L1 mm	a/f mm
253.101	111140	R 1/8 hexagon socket head	8.0	5
253.102	111141	R 1/4 hexagon socket head	10.0	7
253.103	111142	R 3/8 hexagon socket head	10.0	8
253.104	111143	R 1/2 hexagon socket head	10.0	10
253.105	111144	R 3/4 hexagon socket head	14.0	14
253.106	111145	R 1 hexagon socket head	12.0	17

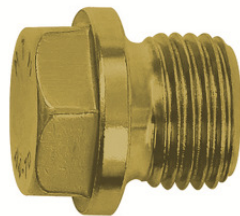


252.96

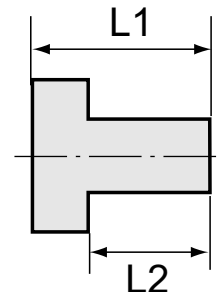


Hexagon head screw plug

Art. No.	Ident No.	Thread	L1 mm	L2 mm	a/f mm
252.95	111146	G 1/8 hexagon head	11.0	6.0	13
252.96	111147	G 1/4 hexagon head	13.0	8.0	17
252.97	111148	G 3/8 hexagon head	14.0	8.0	19
252.98	111149	G 1/2 hexagon head	16.0	10.0	24



252.112



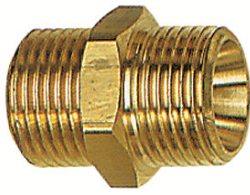
Hexagon head screw plug with collar

Art. No.	Ident No.	Thread	L1 mm	L2 mm	a/f mm
252.110	111150	G 1/8 hexagon head	17.0	8.0	10
252.111	111151	G 1/4 hexagon head	21.0	12.0	13
252.112	111152	G 3/8 hexagon head	21.0	12.0	17
252.113	111153	G 1/2 hexagon head	26.0	14.0	19
252.114	111154	G 3/4 hexagon head	30.0	16.0	24
252.115	111155	G 1 hexagon head	32.0	16.0	27

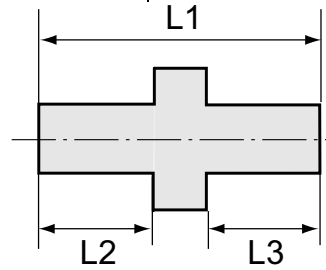
Standard screw fittings

Brass

Art. No. 290.940 to 74-069

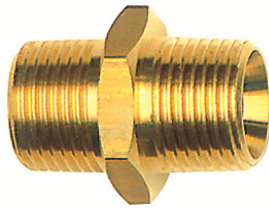


252.05

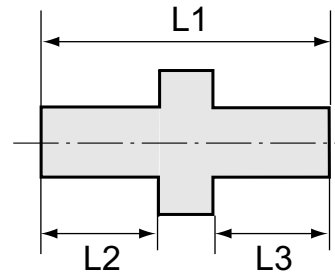


Double nipple, parallel male thread

Art. No.	Ident No.	Thread 1	Thread 2	L1 mm	L2 mm	L3 mm	a/f mm
290.955	108015	M14x1.5	M14x1.5	23.0	9.0	9.0	17
290.956	108016	M16x1.5	M16x1.5	23.0	9.0	9.0	19
290.957	108017	M24x1.5	M24x1.5	40.0	16.0	16.0	27
252 C	111156	M5	M5	13.0	5.0	5.0	7
252 D	111157	M5	G 1/8	17.0	5.0	7.0	14
252 E	111158	M5	G 1/4	21.0	7.0	9.0	17
252 A	111159	G 1/8	G 1/8	21.0	8.0	8.0	14
252 B	111160	G 1/8	G 1/4	22.0	9.0	8.0	17
252 B/1	111161	G 1/8	G 3/8	25.0	9.0	11.0	19
290.950	108012	G 1/4	M14x1.5	23.0	9.0	9.0	17
252.01	101319	G 1/4	G 1/4	23.0	9.0	9.0	17
252.36	111162	G 1/4 ccw	G 1/4 ccw	25.0	10.0	10.0	17
252.02	111163	G 1/4	G 3/8	24.0	9.0	10.0	19
252.02/S	101228	G 1/4	G 1/2	29.0	11.0	12.0	24
290.951	108013	G 3/8	M16x1.5	23.0	9.0	9.0	19
252.03	100906	G 3/8	G 3/8	25.0	10.0	10.0	19
252.37	111164	G 3/8 ccw	G 3/8 ccw	37.0	13.5	13.5	17
252.04	101243	G 3/8	G 1/2	27.0	10.0	12.0	24
252.04/S	111165	G 3/8	G 3/4	36.0	12.0	16.0	32
290.952	108014	G 1/2	M24x1.5	36.0	16.0	12.0	27
252.05	100911	G 1/2	G 1/2	29.0	12.0	12.0	24
252.06	111166	G 1/2	G 3/4	33.0	12.0	12.0	32
252.06/S	111167	G 1/2	G 1	40.0	16.0	16.0	36
252.07	111168	G 3/4	G 3/4	33.0	12.0	12.0	32
252.07/1	111169	G 3/4	G 1	40.0	16.0	16.0	36
252.07/2	100916	G 1	G 1	42.5	17.0	17.0	36
252.07/2-1	111170	G 1	G 1 1/4	32.0	14.0	12.0	42
252.07/2-2	111171	G 1	G 1 1/2	39.0	14.5	14.5	50
252.07/2-3	111172	G 1	G 2	42.0	18.0	15.0	60
252.07/3	111173	G 1 1/4	G 1 1/4	39.0	16.0	16.0	42
252.07/3-1	111174	G 1 1/4	G 1 1/2	40.5	15.0	18.0	50
252.07/3-2	111175	G 1 1/4	G 2	43.0	16.0	18.0	60
252.07/4	100920	G 1 1/2	G 1 1/2	50.0	20.0	20.0	50
252.07/4-1	111176	G 1 1/2	G 2	44.0	18.0	20.5	60
252.07/5	101145	G 2	G 2	50.0	20.0	20.0	62
252.07/5-1	111177	G 2	G 2 1/2	44.0	24.0	19.0	77
252.07/5-2	111178	G 2	G 3	50.0	20.0	20.0	89
252.07/6	111179	G 2 1/2	G 2 1/2	59.0	24.0	24.0	77
252.07/6-1	111180	G 2 1/2	G 3	53.0	20.0	22.5	89
252.07/7	111181	G 3	G 3	60.0	24.5	24.5	89



252.303


Double nipple, conical, acc. to ISO 7-1

Art. No.	Ident No.	Thread 1	Thread 2	L1 mm	L2 mm	L3 mm	a/f mm
252.300	111182	R 1/8	R 1/8	21.0	8.0	8.0	10
252.300-2	111183	R 1/8	R 1/4	24.5	8.0	11.5	14
252.300-3	111184	R 1/8	R 3/8	26.0	8.0	13.0	17
252.301	111185	R 1/4	R 1/4	30.0	12.0	12.0	14
252.301-2	111186	R 1/4	R 3/8	29.5	11.5	13.0	17
252.301-3	111187	R 1/4	R 1/2	32.5	11.5	15.5	22
252.302	100907	R 3/8	R 3/8	38.0	16.0	16.0	22
252.302-2	111188	R 3/8	R 1/2	34.0	15.5	13.0	22
252.302-3	111189	R 3/8	R 3/4	36.5	13.0	17.5	27
252.303	100912	R 1/2	R 1/2	38.0	16.0	16.0	27
252.303-2	111190	R 1/2	R 3/4	39.0	17.5	15.5	27
252.303-3	111191	R 1/2	R 1	42.5	20.0	15.5	34
252.304	111192	R 3/4	R 3/4	51.5	22.0	22.0	32
252.304-2	111193	R 3/4	R 1	44.5	20.0	17.5	34
252.305	100917	R 1	R 1	47.0	19.5	19.5	41

Standard screw fittings

Brass

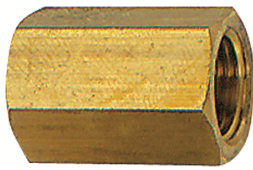
Art. No. 290.940 to 74-069



252.77

Detachable double nipple, male, taper seat

Art. No.	Ident No.	Thread 1	Thread 2	L1 mm	a/f mm	a/f 1 mm
252.75	111194	R 1/8	R 1/8	27.0	15	5
252.81	111195	R 1/8	R 1/4	30.0	15	5
252.76	111196	R 1/4	R 1/4	33.5	19	6
252.82	111197	R 1/4	R 3/8	34.5	19	6
252.77	111198	R 3/8	R 3/8	36.5	22	8
252.78	111199	R 1/2	R 1/2	44.0	27	12
252.79	111200	R 3/4	R 3/4	53.0	36	14
252.80	111201	R 1	R 1	63.5	46	19



252.22

Socket with outer hex

Art. No.	Ident No.	Thread	L1 mm	a/f mm
252.20	111202	M5	12.0	8
252.21	111203	G 1/8	22.0	14
252.22	111204	G 1/4	26.0	17
252.23	111205	G 3/8	26.0	22
252.24	111206	G 1/2	30.0	27
252.24/1	111207	G 3/4	36.0	32
252.24/2	111208	G 1	40.0	41



290.961

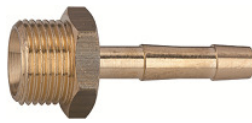
Socket with outer hex, reduced

Art. No.	Ident No.	Thread 1	Thread 2	L1 mm	a/f mm
252.25	111209	G 1/8	G 1/4	26.0	17
252.26	111210	G 1/4	G 3/8	26.0	22
252.27	111211	G 3/8	G 1/2	30.0	27
290.960	108018	G 1/2	M14x1.5	24.0	27
290.961	108019	G 1/2	M16x1.5	24.0	27
290.962	108020	G 3/4	M14x1.5	28.0	32
290.963	108021	G 3/4	M16x1.5	28.0	32

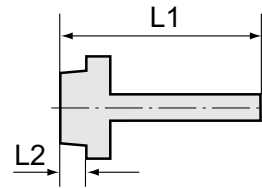
Standard screw fittings

Brass

Art. No. 290.940 to 74-069

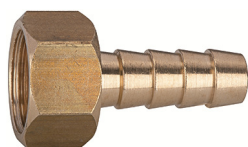


239 E

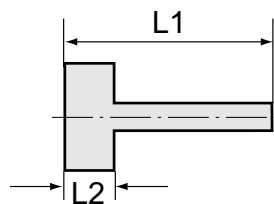


Male hose fitting with parallel male thread

Art. No.	Ident No.	Thread	For hose mm	L1 mm	L2 mm	a/f mm
239.00	111212	M5	I.D. 4	15.5	5.0	7
239.01	111213	G 1/8	I.D. 4	41.5	9.0	14
239.02	111214	G 1/8	I.D. 6	41.5	9.0	14
N239.02-1	111215	G 1/8	I.D. 8	36.0	7.0	14
239.03	111216	G 1/8	I.D. 9	48.5	10.0	17
239 A	111217	G 1/4	I.D. 4	48.5	10.0	17
239 B	111218	G 1/4	I.D. 6	48.5	10.0	17
N239 B-1	111219	G 1/4	I.D. 8	39.0	9.0	17
239 C	111220	G 1/4	I.D. 9	48.5	10.0	17
N239 C-1	111221	G 1/4	I.D. 10	39.0	9.0	17
239 C/S	111222	G 1/4	I.D. 13	48.5	10.0	19
239 D	111223	G 3/8	I.D. 4	48.5	10.0	19
239 E	111224	G 3/8	I.D. 6	48.5	10.0	19
N239 E-1	111226	G 3/8	I.D. 8	39.0	9.0	19
239.40	111225	G 3/8 ccw	I.D. 6	48.5	10.0	19
239 F	111227	G 3/8	I.D. 9	48.5	10.0	19
N239 F-1	111229	G 3/8	I.D. 10	39.0	9.0	19
239.45	111228	G 3/8 ccw	I.D. 9	48.5	10.0	19
239 F/S	111230	G 3/8	I.D. 13	48.5	10.0	19
239 G	111231	G 1/2	I.D. 6	48.5	10.0	24
N239 G-1	111232	G 1/2	I.D. 8	42.0	11.0	24
239 H	111233	G 1/2	I.D. 9	48.5	10.0	24
N239 H-1	111234	G 1/2	I.D. 10	42.0	11.0	24
239 J	107484	G 1/2	I.D. 13	50.0	10.0	24
243.78	107485	G 1/2	I.D. 16	58.0	10.0	20
243.79	107486	G 1/2	I.D. 19	63.0	10.0	20
239 K	111235	G 3/4	I.D. 9	50.5	11.0	27
239 M	107487	G 3/4	I.D. 13	52.0	11.0	27
239 N	107488	G 3/4	I.D. 16	42.5	10.0	32
239 P	107489	G 3/4	I.D. 19	50.5	11.0	27
N239 R	111236	G 3/4	I.D. 25	54.0	12.0	32
N239 S	111237	G 1	I.D. 19	55.0	13.0	38
239 W	111238	G 1	I.D. 25	51.5	11.0	38
239 Z	111239	G 1	I.D. 32	57.0	12.0	38
N239 Z-1	111240	G 1 1/4	I.D. 32	61.0	14.0	50
N239 Z-2	111241	G 1 1/4	I.D. 38	68.5	15.0	42
N239 Z-3	111242	G 1 1/2	I.D. 32	67.0	15.0	55
N239 Z-4	111243	G 1 1/2	I.D. 38	71.0	15.0	55
N239 Z-5	111244	G 1 1/2	I.D. 50	71.0	15.0	55
N239 Z-6	111245	G 2	I.D. 50	88.0	20.0	70



239.19

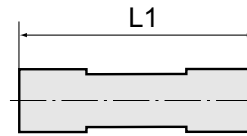


Female hose fitting with female thread

Art. No.	Ident No.	Thread	For hose mm	L1 mm	L2 mm	a/f mm
239.10	111246	G 1/8	I.D. 6	35.0	10.0	12
239.11	111247	G 1/8	I.D. 8	35.0	10.0	12
N239.11-1	111248	G 1/8	I.D. 9	33.5	10.5	14
239.12	111249	G 1/4	I.D. 6	36.0	11.0	15
239.13	111250	G 1/4	I.D. 8	36.0	11.0	15
N239.13-1	111251	G 1/4	I.D. 9	35.0	12.0	17
239.14	111252	G 1/4	I.D. 10	36.0	11.0	15
239.15	111253	G 1/4	I.D. 13	40.5	11.0	15
239.18	111254	G 3/8	I.D. 6	36.0	11.0	19
239.19	111255	G 3/8	I.D. 8	36.0	11.0	19
N239.19-1	111256	G 3/8	I.D. 9	36.0	13.0	19
239.20	111257	G 3/8	I.D. 10	36.0	11.0	19
239.21	111258	G 3/8	I.D. 13	40.5	11.0	19
239.25	111259	G 1/2	I.D. 6	39.0	14.5	23
239.26	111260	G 1/2	I.D. 8	39.0	14.5	23
N239.26-1	111261	G 1/2	I.D. 9	37.0	14.0	24
239.27	111262	G 1/2	I.D. 10	39.0	14.5	23
239.28	111263	G 1/2	I.D. 13	44.0	14.5	23
N239.28-1	111264	G 3/4	I.D. 13	39.5	16.5	30
N239.28-2	111265	G 3/4	I.D. 16	39.5	16.5	30
N239.28-3	111266	G 3/4	I.D. 19	39.5	16.5	30
N239.29	111267	G 1	I.D. 19	42.5	19.5	38
N239.29-1	111268	G 1	I.D. 25	47.0	19.5	38

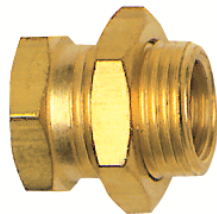


170 B

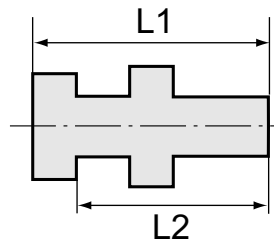


Double hose fittings

Art. No.	Ident No.	For hose mm	L1 mm
170 A	111269	I.D. 6	72.0
170 B	111270	I.D. 9	72.0
170 C	111271	I.D. 13	72.0
170 D	111272	I.D. 16	72.0
170 E	111273	I.D. 19	72.0
170 F	111274	I.D. 25	72.0

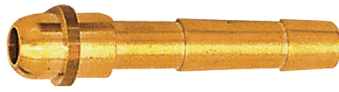


252.42

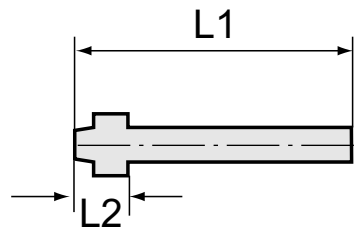


Bulkhead connectors

Art. No.	Ident No.	Male thread	Female thread	L1 mm	L2 mm	a/f 1 mm	a/f 2 mm
252.40	111275	G 1/8	M5	15.0	11.5	14	14
252.41	111276	G 1/4	G 1/8	18.0	14.0	17	17
252.42	111277	G 3/8	G 1/4	22.0	17.0	19	24
252.43	111278	G 1/2	G 3/8	27.0	21.0	24	24



236 C



Hose fitting with ball nipple

Art. No.	Ident No.	For hose mm	For swivel	L1 mm	L2 mm
236.01	111279	I.D. 4	G 1/8	47.0	12.0
236.02	111280	I.D. 6	G 1/8	33.5	6.0
236 A	111281	I.D. 4	G 1/4	47.0	13.5
236 B	111282	I.D. 6	G 1/4	47.0	13.5
236 C	111283	I.D. 9	G 1/4	47.0	13.5
236 D	111284	I.D. 4	G 3/8	48.5	15.0
236 E	111285	I.D. 6	G 3/8	48.5	15.0
236 F	111286	I.D. 9	G 3/8	48.5	15.0
236 G	111287	I.D. 6	G 1/2	48.5	15.0
236 H	111288	I.D. 9	G 1/2	48.5	15.0
236 J	111289	I.D. 13	G 1/2	48.5	15.0



234 B

Hexagonal swivel nut

Art. No.	Ident No.	Thread	For fitting size	L1 mm	a/f mm
234/0	111290	G 1/8	I.D. 4, I.D. 6	13.0	14
234 A	111291	G 1/4	I.D. 4, I.D. 6	15.0	17
234 A/S	111292	G 1/4	I.D. 9	15.0	17
234 B	111293	G 3/8	I.D. 4, I.D. 6, I.D. 9	15.0	19
234 C	111294	G 1/2	I.D. 6, I.D. 9	16.0	24
234 C/S	111295	G 1/2	I.D. 13	16.0	24
234 D	111296	G 1/4 ccw	I.D. 4, I.D. 6	15.0	17
234 E	111297	G 3/8 ccw	I.D. 4, I.D. 6, I.D. 9	15.0	19
234 F	111298	G 1/2 ccw	I.D. 13	20.5	24



252 H

Hexagonal lock nut

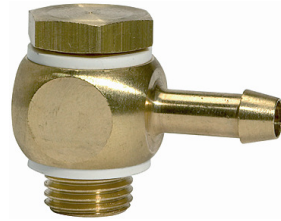
Art. No.	Ident No.	Thread	L1 mm	a/f mm
252 F	111299	G 1/8	3.5	15
252 G	111300	G 1/4	3.5	17
252 H	111301	G 3/8	4.5	19
252 J	111302	G 1/2	5.0	24
252 K/1	111303	G 3/4	5.0	32
252 K/2	111304	G 1	6.0	41
252 I	111305	G 1 1/4	8.5	50
252 O	111306	G 1 1/2	8.5	60
252 Q	111307	G 2	11.0	70
252 L	111308	M10x1.0	4.0	14
252 M	111309	M12x1.0	5.0	17
252 N	111310	M14x1.0	4.0	19
252 P	111311	M16x1.0	5.0	22
252 R	101241	M20x1.5	4.5	27
252 S	111312	M22x1.0	4.5	27
252 W	111313	M28x1.5	6.0	36



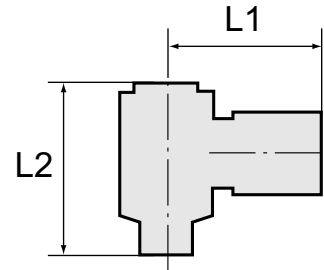
VK 203

Hexagonal cap

Art. No.	Ident No.	Thread	L1 mm	a/f mm
VK 201	111314	G 1/8	10.0	13
VK 202	111315	G 1/4	10.0	16
VK 203	111316	G 3/8	10.0	19
VK 204	111317	G 1/2	12.0	23
VK 205	111318	G 3/4	14.0	29
VK 206	111319	G 1	15.0	36
VK 207	111320	G 1 1/4	17.0	46
VK 208	111321	G 1 1/2	19.5	53
VK 209	111322	G 2	19.5	64



74-046



Ring nipple:	Brass
Banjo bolt:	Nickel-plated brass
Sealing rings:	PVC
Temperature range:	-10 °C to +70 °C
Working pressure range:	0.95 to 15 bar
Thread:	Withworth-pipe thread
Hose connectors:	detachable

Swivel hose fitting, parallel male thread

Art. No.	Ident No.	Thread	For hose mm	L1 mm	L2 mm	a/f mm
74-024	111323	G 1/8	I.D. 4	26.0	28.0	14
74-026	111324	G 1/8	I.D. 6	26.0	28.0	14
74-046	111325	G 1/4	I.D. 6	28.0	29.0	17
74-049	111326	G 1/4	I.D. 9	28.0	30.5	17
74-066	111327	G 3/8	I.D. 6	30.0	32.0	22
74-069	111328	G 3/8	I.D. 9	30.0	32.0	22